



[Go to Product page](#)

Datasheet for ABIN7184675

## anti-CTSC antibody (Cleaved-Arg394)

### 1 Image

#### Overview

Quantity:	100 µg
Target:	CTSC
Binding Specificity:	Cleaved-Arg394
Reactivity:	Human
Host:	Rabbit
Clonality:	Polyclonal
Conjugate:	This CTSC antibody is un-conjugated
Application:	Western Blotting (WB), ELISA

#### Product Details

Immunogen:	Synthesized peptide derived from the C-terminal region of Human Cathepsin C HC.
Isotype:	IgG
Cross-Reactivity:	Human
Purification:	The antibody was affinity-purified from rabbit antiserum by affinity-chromatography using epitope-specific immunogen.

#### Target Details

Target:	CTSC
Alternative Name:	CTSC ( <a href="#">CTSC Products</a> )
Background:	AI047818 antibody, CATC antibody, CATC_HUMAN antibody, Cathepsin C antibody, Cathepsin J

## Target Details

antibody, CPPI antibody, CTSC antibody, Dipeptidyl peptidase 1 antibody, Dipeptidyl peptidase 1 light chain antibody, Dipeptidyl peptidase I antibody, Dipeptidyl peptidase I exclusion domain chain antibody, Dipeptidyl peptidase I heavy chain antibody, Dipeptidyl peptidase I light chain antibody, Dipeptidyl transferase antibody, DPP I antibody, DPP-I antibody, DPPI antibody, EC 3.4.14.1 antibody, HMS antibody, JP antibody, JPD antibody, MGC126959 antibody, PALS antibody, PDON1 antibody, PLS antibody

UniProt: [P53634](#)

## Application Details

Application Notes: WB:1:500-1:2000, ELISA:1:20000,

Restrictions: For Research Use only

## Handling

Format: Liquid

Buffer: Liquid in PBS containing 50 % glycerol, 0.5 % BSA and 0.02 % sodium azide.

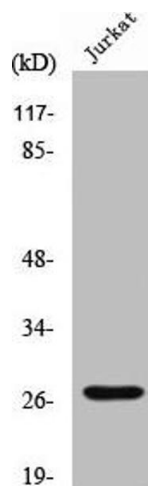
Preservative: Sodium azide

Precaution of Use: This product contains Sodium azide: a POISONOUS AND HAZARDOUS SUBSTANCE which should be handled by trained staff only.

Storage: -20 °C,-80 °C

Storage Comment: Upon receipt, store at -20°C or -80°C. Avoid repeated freeze.

## Images



### Western Blotting

**Image 1.** Western Blot analysis of Jurkat cells using Cleaved-Cathepsin C HC (R394) Polyclonal Antibody