

Datasheet for ABIN7184677  
**anti-Cathepsin L antibody (Cleaved-Thr288)**[Go to Product page](#)

## 1 Image

## Overview

Quantity:	100 µg
Target:	Cathepsin L (CTSL1)
Binding Specificity:	Cleaved-Thr288
Reactivity:	Human
Host:	Rabbit
Clonality:	Polyclonal
Conjugate:	This Cathepsin L antibody is un-conjugated
Application:	Western Blotting (WB), ELISA

## Product Details

Immunogen:	Synthesized peptide derived from the C-terminal region of Human Cathepsin L1 HC.
Isotype:	IgG
Cross-Reactivity:	Human
Purification:	The antibody was affinity-purified from rabbit antiserum by affinity-chromatography using epitope-specific immunogen.

## Target Details

Target:	Cathepsin L (CTSL1)
Alternative Name:	CTSL ( <a href="#">CTSL1 Products</a> )
Background:	Cathepsin L antibody, cathepsin L, 1 b antibody, Cathepsin L1 antibody, Cathepsin L1 light chain

Target Details

	antibody, CathepsinL antibody, CATL antibody, CATL1_HUMAN antibody, cb15 antibody, CTSL antibody, CTSL1 antibody, ctsl1b antibody, FLJ31037 antibody, hgg1 antibody, Major excreted protein antibody, MEP antibody, MGC123162 antibody, wu:fb30g09 antibody
UniProt:	P07711
Pathways:	Activation of Innate immune Response, Toll-Like Receptors Cascades

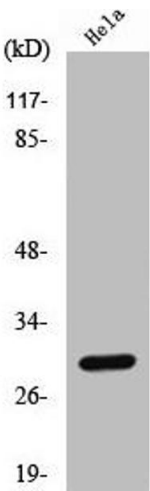
Application Details

Application Notes:	WB:1:500-1:2000, ELISA:1:10000,
Restrictions:	For Research Use only

Handling

Format:	Liquid
Buffer:	Liquid in PBS containing 50 % glycerol, 0.5 % BSA and 0.02 % sodium azide.
Preservative:	Sodium azide
Precaution of Use:	This product contains Sodium azide: a POISONOUS AND HAZARDOUS SUBSTANCE which should be handled by trained staff only.
Storage:	-20 °C,-80 °C
Storage Comment:	Upon receipt, store at -20°C or -80°C. Avoid repeated freeze.

Images



**Western Blotting**

**Image 1.** Western Blot analysis of HeLa cells using Cleaved-Cathepsin L1 HC (T288) Polyclonal Antibody