

Datasheet for ABIN7184678  
**anti-Caveolin-1 antibody (C-Term)**



[Go to Product page](#)

2 Images

## Overview

Quantity:	100 µg
Target:	Caveolin-1 (CAV1)
Binding Specificity:	C-Term
Reactivity:	Human
Host:	Rabbit
Clonality:	Polyclonal
Conjugate:	This Caveolin-1 antibody is un-conjugated
Application:	Western Blotting (WB), ELISA, Immunofluorescence (IF)

## Product Details

Immunogen:	Synthesized peptide derived from the C-terminal region of Human Caveolin-1.
Isotype:	IgG
Cross-Reactivity:	Human, Mouse, Rat
Purification:	The antibody was affinity-purified from rabbit antiserum by affinity-chromatography using epitope-specific immunogen.

## Target Details

Target:	Caveolin-1 (CAV1)
Alternative Name:	<a href="#">CAV1 (CAV1 Products)</a>
Background:	BSCL3 antibody, CAV antibody, CAV1 antibody, CAV1_HUMAN antibody, caveolae protein, 22

## Target Details

kD antibody, caveolin 1 alpha isoform antibody, caveolin 1 beta isoform antibody, Caveolin 1 caveolae protein 22 kDa antibody, Caveolin-1 antibody, Caveolin1 antibody, cell growth-inhibiting protein 32 antibody, CGL3 antibody, LCCNS antibody, MSTP085 antibody, OTTHUMP00000025031 antibody, PPH3 antibody, VIP 21 antibody, VIP21 antibody

UniProt: [Q03135](#)

Pathways: [Maintenance of Protein Location](#), [Signaling Events mediated by VEGFR1 and VEGFR2](#), [Negative Regulation of Transporter Activity](#), [VEGFR1 Specific Signals](#)

## Application Details

Application Notes: WB:1:500-1:2000, IF:1:200-1:1000, ELISA:1:5000,

Restrictions: For Research Use only

## Handling

Format: Liquid

Buffer: Liquid in PBS containing 50 % glycerol, 0.5 % BSA and 0.02 % sodium azide.

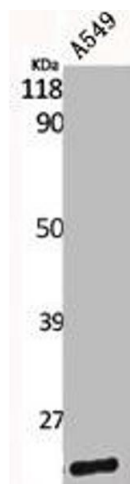
Preservative: Sodium azide

Precaution of Use: This product contains Sodium azide: a POISONOUS AND HAZARDOUS SUBSTANCE which should be handled by trained staff only.

Storage: -20 °C,-80 °C

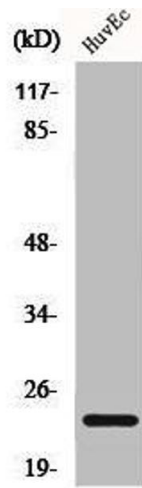
Storage Comment: Upon receipt, store at -20°C or -80°C. Avoid repeated freeze.

## Images



### Western Blotting

**Image 1.** Western Blot analysis of A549 cells using Caveolin-1 Polyclonal Antibody



### Western Blotting

**Image 2.** Western Blot analysis of HuvEc cells using Caveolin-1 Polyclonal Antibody