



[Go to Product page](#)

Datasheet for ABIN7184680  
**anti-CBP antibody (C-Term)**

2 Images

Overview

Quantity:	100 µg
Target:	CBP (CREBBP)
Binding Specificity:	C-Term
Reactivity:	Human
Host:	Rabbit
Clonality:	Polyclonal
Conjugate:	This CBP antibody is un-conjugated
Application:	Western Blotting (WB), Immunohistochemistry (IHC), ELISA, Immunofluorescence (IF)

Product Details

Immunogen:	Synthesized peptide derived from the C-terminal region of Human CBP.
Isotype:	IgG
Cross-Reactivity:	Human, Mouse
Purification:	The antibody was affinity-purified from rabbit antiserum by affinity-chromatography using epitope-specific immunogen.

Target Details

Target:	CBP (CREBBP)
Alternative Name:	CREBBP ( <a href="#">CREBBP Products</a> )
Background:	CBP antibody, CBP_HUMAN antibody, CREB binding protein antibody, CREB-binding protein

## Target Details

antibody, Crebbp antibody, Cyclic AMP responsive enhancer binding protein antibody, KAT3A antibody, RSTS antibody, RTS antibody, Rubinstein Taybi syndrome antibody

UniProt: [Q92793](#)

Pathways: [TCR Signaling](#), [Interferon-gamma Pathway](#), [Stem Cell Maintenance](#), [Chromatin Binding](#), [Regulation of Lipid Metabolism by PPARalpha](#)

## Application Details

Application Notes: WB:1:500-1:2000, IHC:1:100-1:300, IF:1:200-1:1000, ELISA:1:10000,

Restrictions: For Research Use only

## Handling

Format: Liquid

Buffer: Liquid in PBS containing 50 % glycerol, 0.5 % BSA and 0.02 % sodium azide.

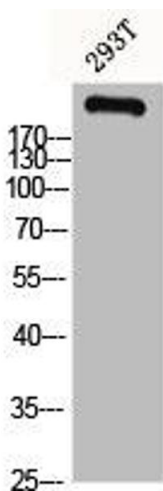
Preservative: Sodium azide

Precaution of Use: This product contains Sodium azide: a POISONOUS AND HAZARDOUS SUBSTANCE which should be handled by trained staff only.

Storage: -20 °C,-80 °C

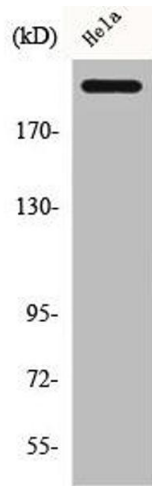
Storage Comment: Upon receipt, store at -20°C or -80°C. Avoid repeated freeze.

## Images



### Western Blotting

**Image 1.** Western Blot analysis of 293T cells using CBP Polyclonal Antibody



### Western Blotting

**Image 2.** Western Blot analysis of HeLa cells using CBP Polyclonal Antibody