

Datasheet for ABIN7184699  
**anti-SLC3A2 antibody (C-Term)**[Go to Product page](#)

## 1 Image

## Overview

Quantity:	100 µg
Target:	SLC3A2
Binding Specificity:	C-Term
Reactivity:	Human
Host:	Rabbit
Clonality:	Polyclonal
Conjugate:	This SLC3A2 antibody is un-conjugated
Application:	Western Blotting (WB), ELISA

## Product Details

Immunogen:	Synthesized peptide derived from the C-terminal region of Human CD98.
Isotype:	IgG
Cross-Reactivity:	Human, Mouse, Rat
Purification:	The antibody was affinity-purified from rabbit antiserum by affinity-chromatography using epitope-specific immunogen.

## Target Details

Target:	SLC3A2
Alternative Name:	SLC3A2 ( <a href="#">SLC3A2 Products</a> )
Background:	4F2 antibody, 4F2 cell surface antigen heavy chain antibody, 4F2 cell-surface antigen heavy

## Target Details

chain antibody, 4F2 heavy chain antibody, 4F2 heavy chain antigen antibody, 4F2\_HUMAN antibody, 4F2hc antibody, 4T2HC antibody, Antigen defined by monoclonal antibody 4F2 heavy chain antibody, Antigen identified by monoclonal antibodies 4F2 TRA1.10 TROP4 and T43 antibody, CD 98 antibody, CD98 antibody, CD98 antigen antibody, CD98 heavy chain antibody, CD98HC antibody, Heavy chain antibody, Lymphocyte activation antigen 4F2 large subunit antibody, MDU 1 antibody, MDU1 antibody, Monoclonal antibody 44D7 antibody, NACAE antibody, Slc3a2 antibody, Solute carrier family 3 (activators of dibasic and neutral amino acid transport) member 2 antibody, Solute carrier family 3 member 2 antibody

UniProt: [P08195](#)

## Application Details

Application Notes: WB:1:500-1:2000, ELISA:1:10000,

Restrictions: For Research Use only

## Handling

Format: Liquid

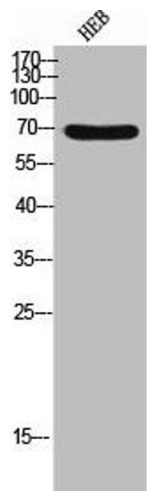
Buffer: Liquid in PBS containing 50 % glycerol, 0.5 % BSA and 0.02 % sodium azide.

Preservative: Sodium azide

Precaution of Use: This product contains Sodium azide: a POISONOUS AND HAZARDOUS SUBSTANCE which should be handled by trained staff only.

Storage: -20 °C,-80 °C

Storage Comment: Upon receipt, store at -20°C or -80°C. Avoid repeated freeze.



Western Blotting

**Image 1.** Western Blot analysis of HEB cells using CD98 Polyclonal Antibody