



[Go to Product page](#)

Datasheet for ABIN7184702
anti-CDCA3 antibody (C-Term)

1 Image

Overview

Quantity:	100 µg
Target:	CDCA3
Binding Specificity:	C-Term
Reactivity:	Human
Host:	Rabbit
Clonality:	Polyclonal
Conjugate:	This CDCA3 antibody is un-conjugated
Application:	Western Blotting (WB), Immunohistochemistry (IHC), ELISA, Immunofluorescence (IF)

Product Details

Immunogen:	Synthesized peptide derived from the C-terminal region of Human CdcA3.
Isotype:	IgG
Cross-Reactivity:	Human, Mouse, Rat
Purification:	The antibody was affinity-purified from rabbit antiserum by affinity-chromatography using epitope-specific immunogen.

Target Details

Target:	CDCA3
Alternative Name:	CDCA3 (CDCA3 Products)
Background:	CDCA3 antibody, C8 antibody, GRCC8 antibody, TOME1Cell division cycle-associated protein 3

Target Details

antibody, Gene-rich cluster protein C8 antibody, Trigger of mitotic entry protein 1 antibody, TOME-1 antibody

UniProt: [Q99618](#)

Application Details

Application Notes: WB:1:500-1:2000, IHC:1:100-1:300, IF:1:200-1:1000, ELISA:1:5000,

Restrictions: For Research Use only

Handling

Format: Liquid

Buffer: Liquid in PBS containing 50 % glycerol, 0.5 % BSA and 0.02 % sodium azide.

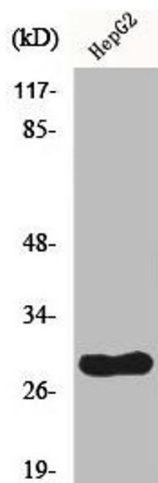
Preservative: Sodium azide

Precaution of Use: This product contains Sodium azide: a POISONOUS AND HAZARDOUS SUBSTANCE which should be handled by trained staff only.

Storage: -20 °C,-80 °C

Storage Comment: Upon receipt, store at -20°C or -80°C. Avoid repeated freeze.

Images



Western Blotting

Image 1. Western Blot analysis of HepG2 cells using CdcA3 Polyclonal Antibody