

Datasheet for ABIN7184738
anti-Claudin 5 antibody (C-Term)[Go to Product page](#)

2 Images

Overview

Quantity:	100 µg
Target:	Claudin 5 (CLDN5)
Binding Specificity:	C-Term
Reactivity:	Human
Host:	Rabbit
Clonality:	Polyclonal
Conjugate:	This Claudin 5 antibody is un-conjugated
Application:	ELISA, Immunohistochemistry (IHC), Western Blotting (WB), Immunofluorescence (IF)

Product Details

Immunogen:	Synthesized peptide derived from the C-terminal region of Human Claudin-5.
Isotype:	IgG
Cross-Reactivity:	Human, Mouse, Rat
Purification:	The antibody was affinity-purified from rabbit antiserum by affinity-chromatography using epitope-specific immunogen.

Target Details

Target:	Claudin 5 (CLDN5)
Alternative Name:	CLDN5 (CLDN5 Products)
Background:	Androgen withdrawal and apoptosis induced protein RVP1 like antibody, AWAL antibody, BEC 1

Target Details

antibody, BEC1 antibody, Claudin 5 (transmembrane protein deleted in velocardiofacial syndrome) antibody, Claudin-5 antibody, Claudin5 antibody, CLD5_HUMAN antibody, CLDN 5 antibody, Cldn5 antibody, CPETR L1 antibody, CPETRL 1 antibody, CPETRL1 antibody, TMDVCF antibody, TMVCF antibody, Transmembrane protein deleted in VCFS antibody, Transmembrane protein deleted in velocardiofacial syndrome antibody

UniProt: [O00501](#)

Pathways: [Hepatitis C](#)

Application Details

Application Notes: WB:1:500-1:2000, IHC:1:100-1:300, IF:1:200-1:1000, ELISA:1:40000,

Restrictions: For Research Use only

Handling

Format: Liquid

Buffer: Liquid in PBS containing 50 % glycerol, 0.5 % BSA and 0.02 % sodium azide.

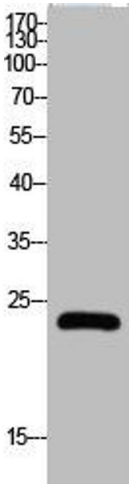
Preservative: Sodium azide

Precaution of Use: This product contains Sodium azide: a POISONOUS AND HAZARDOUS SUBSTANCE which should be handled by trained staff only.

Storage: -20 °C,-80 °C

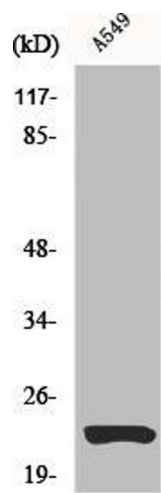
Storage Comment: Upon receipt, store at -20°C or -80°C. Avoid repeated freeze.

Images



Western Blotting

Image 1. Western Blot analysis of HELA cells using Claudin-5 Polyclonal Antibody



Western Blotting

Image 2. Western Blot analysis of A549 cells using Claudin-5 Polyclonal Antibody