



[Go to Product page](#)

Datasheet for ABIN7184748
anti-COL11A2 antibody (C-Term)

1 Image

Overview

Quantity:	100 µg
Target:	COL11A2
Binding Specificity:	C-Term
Reactivity:	Human
Host:	Rabbit
Clonality:	Polyclonal
Conjugate:	This COL11A2 antibody is un-conjugated
Application:	Western Blotting (WB), ELISA, Immunohistochemistry (IHC)

Product Details

Immunogen:	Synthesized peptide derived from the C-terminal region of Human COL11A2.
Isotype:	IgG
Cross-Reactivity:	Human, Mouse
Purification:	The antibody was affinity-purified from rabbit antiserum by affinity-chromatography using epitope-specific immunogen.

Target Details

Target:	COL11A2
Alternative Name:	COL11A2 (COL11A2 Products)
Background:	COBA2_HUMAN antibody, COL11A2 antibody, Collagen alpha 2(XI) antibody, Collagen alpha-

Target Details

2(XI) chain antibody, Collagen type XI alpha 2 antibody, Collagen XI a2 antibody, DAQB-79P13.8 antibody, DFNA13 antibody, DFNB53 antibody, FBCG2 antibody, HGNC:2187 antibody, HKE5 antibody, PARP antibody, Pro a2 chain of collagen type XI antibody, STL3 antibody

UniProt: [P13942](#)

Pathways: [RTK Signaling](#), [Sensory Perception of Sound](#), [Chromatin Binding](#)

Application Details

Application Notes: WB:1:500-1:2000, IHC:1:100-1:300, ELISA:1:20000,

Restrictions: For Research Use only

Handling

Format: Liquid

Buffer: Liquid in PBS containing 50 % glycerol, 0.5 % BSA and 0.02 % sodium azide.

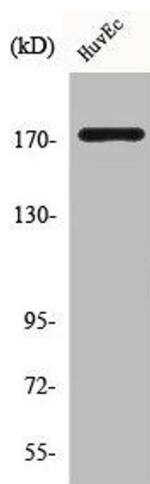
Preservative: Sodium azide

Precaution of Use: This product contains Sodium azide: a POISONOUS AND HAZARDOUS SUBSTANCE which should be handled by trained staff only.

Storage: -20 °C,-80 °C

Storage Comment: Upon receipt, store at -20°C or -80°C. Avoid repeated freeze.

Images



Western Blotting

Image 1. Western Blot analysis of HuvEc cells using COL11A2 Polyclonal Antibody