



[Go to Product page](#)

Datasheet for ABIN7184785
anti-PPIB antibody (C-Term)

1 Image

Overview

Quantity:	100 µg
Target:	PPIB
Binding Specificity:	C-Term
Reactivity:	Human
Host:	Rabbit
Clonality:	Polyclonal
Conjugate:	This PPIB antibody is un-conjugated
Application:	Western Blotting (WB), ELISA

Product Details

Immunogen:	Synthesized peptide derived from the C-terminal region of Human CyPB.
Isotype:	IgG
Cross-Reactivity:	Human, Mouse, Rat
Purification:	The antibody was affinity-purified from rabbit antiserum by affinity-chromatography using epitope-specific immunogen.

Target Details

Target:	PPIB
Alternative Name:	PPIB (PPIB Products)
Background:	AA408962 antibody, AA553318 antibody, A1844835 antibody, Cphn 2 antibody, Cphn2 antibody,

Target Details

Cyclophilin B antibody, Cyclophilin like protein antibody, CyP 20b antibody, CYP S1 antibody, CYP-S1 antibody, CYPB antibody, EC 5.2.1.8 antibody, MGC14109 antibody, MGC2224 antibody, OI9 antibody, peptidyl prolyl cis trans isomerase B antibody, Peptidyl prolyl cis trans isomerase B precursor antibody, Peptidyl-prolyl cis-trans isomerase B antibody, peptidylprolyl isomerase B (cyclophilin B) antibody, Peptidylprolyl isomerase B antibody, PPlase antibody, PPlase B antibody, Ppib antibody, PPIB_HUMAN antibody, Rotamase antibody, Rotamase B antibody, S cyclophilin antibody, S-cyclophilin antibody, SCYLP antibody

UniProt: [P23284](#)

Application Details

Application Notes: WB:1:500-1:2000, ELISA:1:20000,

Restrictions: For Research Use only

Handling

Format: Liquid

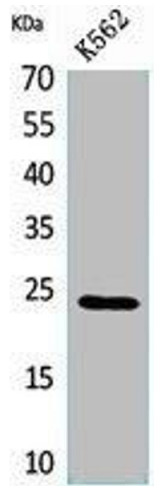
Buffer: Liquid in PBS containing 50 % glycerol, 0.5 % BSA and 0.02 % sodium azide.

Preservative: Sodium azide

Precaution of Use: This product contains Sodium azide: a POISONOUS AND HAZARDOUS SUBSTANCE which should be handled by trained staff only.

Storage: -20 °C,-80 °C

Storage Comment: Upon receipt, store at -20°C or -80°C. Avoid repeated freeze.



Western Blotting

Image 1. Western Blot analysis of K562 cells using CyPB Polyclonal Antibody.