

Datasheet for ABIN7184797
anti-Cytokeratin 7 antibody (C-Term)



[Go to Product page](#)

2 Images

Overview

Quantity:	100 µg
Target:	Cytokeratin 7 (KRT7)
Binding Specificity:	C-Term
Reactivity:	Human
Host:	Rabbit
Clonality:	Polyclonal
Conjugate:	This Cytokeratin 7 antibody is un-conjugated
Application:	Western Blotting (WB), Immunohistochemistry (IHC), Immunofluorescence (IF), ELISA

Product Details

Immunogen:	Synthesized peptide derived from the C-terminal region of Human Cytokeratin 7.
Isotype:	IgG
Cross-Reactivity:	Human
Purification:	The antibody was affinity-purified from rabbit antiserum by affinity-chromatography using epitope-specific immunogen.

Target Details

Target:	Cytokeratin 7 (KRT7)
Alternative Name:	KRT7 (KRT7 Products)
Background:	CK 7 antibody, CK-7 antibody, CK7 antibody, Cytokeratin 7 antibody, Cytokeratin-7 antibody,

Target Details

D15Wsu77e antibody, K2C7 antibody, K2C7_HUMAN antibody, K7 antibody, Keratin 7 antibody, Keratin 7, type II antibody, Keratin type II cytoskeletal 7 antibody, Keratin, 55K type II cytoskeletal antibody, Keratin, simple epithelial antibody, Keratin, simple epithelial type I, K7 antibody, Keratin, type II cytoskeletal 7 antibody, Keratin-7 antibody, Krt2-7 antibody, KRT7 antibody, MGC11625 antibody, MGC129731 antibody, MGC3625 antibody, Sarcolectin antibody, SCL antibody, Type II mesothelial keratin K7 antibody, Type-II keratin Kb7 antibody

UniProt: [P08729](#)

Application Details

Application Notes: WB:1:500-1:2000, IHC:1:100-1:300, IF:1:200-1:1000, ELISA:1:40000,

Restrictions: For Research Use only

Handling

Format: Liquid

Buffer: Liquid in PBS containing 50 % glycerol, 0.5 % BSA and 0.02 % sodium azide.

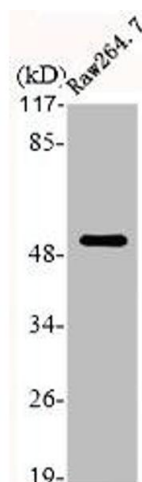
Preservative: Sodium azide

Precaution of Use: This product contains Sodium azide: a POISONOUS AND HAZARDOUS SUBSTANCE which should be handled by trained staff only.

Storage: -20 °C,-80 °C

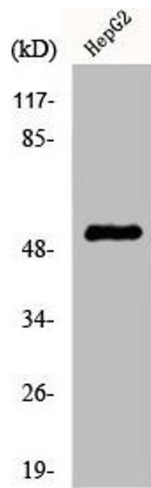
Storage Comment: Upon receipt, store at -20°C or -80°C. Avoid repeated freeze.

Images



Western Blotting

Image 1. Western Blot analysis of RAE264.7 cells using Cytokeratin 7 Polyclonal Antibody



Western Blotting

Image 2. Western Blot analysis of HepG2 cells using Cytokeratin 7 Polyclonal Antibody