



[Go to Product page](#)

Datasheet for ABIN7184800
anti-DRD4 antibody (C-Term)

2 Images

Overview

Quantity:	100 µg
Target:	DRD4
Binding Specificity:	C-Term
Reactivity:	Human
Host:	Rabbit
Clonality:	Polyclonal
Conjugate:	This DRD4 antibody is un-conjugated
Application:	Western Blotting (WB), ELISA, Immunofluorescence (IF)

Product Details

Immunogen:	Synthesized peptide derived from the C-terminal region of Human D4DR.
Isotype:	IgG
Cross-Reactivity:	Human, Mouse, Rat
Purification:	The antibody was affinity-purified from rabbit antiserum by affinity-chromatography using epitope-specific immunogen.

Target Details

Target:	DRD4
Alternative Name:	DRD4 (DRD4 Products)
Background:	D(2C) dopamine receptor antibody, D(4) dopamine receptor (D(2C) dopamine receptor).

Target Details

antibody, D(4) dopamine receptor antibody, D4 dopamine receptor antibody, D4DR antibody, Dopamine D4 receptor antibody, DRD 4 antibody, Drd4 antibody, DRD4_HUMAN antibody

UniProt: [P21917](#)

Pathways: [cAMP Metabolic Process](#), [Synaptic Membrane](#), [Proton Transport](#), [Photoperiodism](#), [Negative Regulation of Transporter Activity](#)

Application Details

Application Notes: WB:1:500-1:2000, IF:1:200-1:1000, ELISA:1:40000,

Restrictions: For Research Use only

Handling

Format: Liquid

Buffer: Liquid in PBS containing 50 % glycerol, 0.5 % BSA and 0.02 % sodium azide.

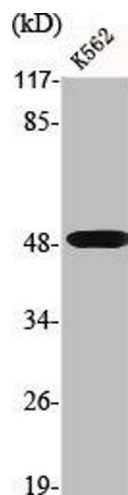
Preservative: Sodium azide

Precaution of Use: This product contains Sodium azide: a POISONOUS AND HAZARDOUS SUBSTANCE which should be handled by trained staff only.

Storage: -20 °C,-80 °C

Storage Comment: Upon receipt, store at -20°C or -80°C. Avoid repeated freeze.

Images



Western Blotting

Image 1. Western Blot analysis of K562 cells using D4DR Polyclonal Antibody



Western Blotting

Image 2. Western Blot analysis of K562 cells using D4DR Polyclonal Antibody