



[Go to Product page](#)

Datasheet for ABIN7184802
anti-NBL1 antibody (C-Term)

1 Image

Overview

| | |
|----------------------|---|
| Quantity: | 100 µg |
| Target: | NBL1 |
| Binding Specificity: | C-Term |
| Reactivity: | Human |
| Host: | Rabbit |
| Clonality: | Polyclonal |
| Conjugate: | This NBL1 antibody is un-conjugated |
| Application: | Western Blotting (WB), ELISA, Immunohistochemistry (IHC), Immunofluorescence (IF) |

Product Details

| | |
|-------------------|---|
| Immunogen: | Synthesized peptide derived from the C-terminal region of Human DAN. |
| Isotype: | IgG |
| Cross-Reactivity: | Human |
| Purification: | The antibody was affinity-purified from rabbit antiserum by affinity-chromatography using epitope-specific immunogen. |

Target Details

| | |
|-------------------|--|
| Target: | NBL1 |
| Alternative Name: | NBL1 (NBL1 Products) |
| Background: | D1S1733E antibody, DAN antibody, DAN domain family member 1 antibody, DAND 1 antibody, |

Target Details

DAND1 antibody, Differential screening selected gene aberrant in neuroblastoma antibody, MGC8972 antibody, NB antibody, NBL 1 antibody, NBL1 antibody, NBL1_HUMAN antibody, Neuroblastoma candidate region suppression of tumorigenicity 1 antibody, Neuroblastoma suppression of tumorigenicity 1 antibody, Neuroblastoma suppressor of tumorigenicity 1 antibody, NO 3 antibody, NO3 antibody, Protein N03 antibody, Zinc finger protein DAN antibody

UniProt: [P41271](#)

Application Details

Application Notes: WB:1:500-1:2000, IHC:1:100-1:300, IF:1:200-1:1000, ELISA:1:20000,

Restrictions: For Research Use only

Handling

Format: Liquid

Buffer: Liquid in PBS containing 50 % glycerol, 0.5 % BSA and 0.02 % sodium azide.

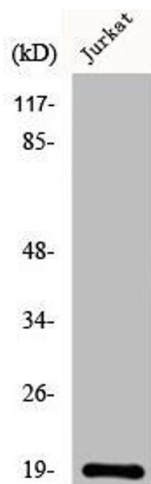
Preservative: Sodium azide

Precaution of Use: This product contains Sodium azide: a POISONOUS AND HAZARDOUS SUBSTANCE which should be handled by trained staff only.

Storage: -20 °C,-80 °C

Storage Comment: Upon receipt, store at -20°C or -80°C. Avoid repeated freeze.

Images



Western Blotting

Image 1. Western Blot analysis of COLO205 cells using DAN Polyclonal Antibody