



[Go to Product page](#)

Datasheet for ABIN7184806  
**anti-DDX52 antibody (C-Term)**

1 Image

### Overview

Quantity:	100 µg
Target:	DDX52
Binding Specificity:	C-Term
Reactivity:	Human
Host:	Rabbit
Clonality:	Polyclonal
Conjugate:	This DDX52 antibody is un-conjugated
Application:	Western Blotting (WB), ELISA, Immunohistochemistry (IHC)

### Product Details

Immunogen:	Synthesized peptide derived from the C-terminal region of Human DDX52.
Isotype:	IgG
Cross-Reactivity:	Human
Purification:	The antibody was affinity-purified from rabbit antiserum by affinity-chromatography using epitope-specific immunogen.

### Target Details

Target:	DDX52
Alternative Name:	DDX52 ( <a href="#">DDX52 Products</a> )
Background:	ATP dependent RNA helicase ROK1 like antibody, ATP-dependent RNA helicase ROK1-like

## Target Details

antibody, DDX52 antibody, DDX52\_HUMAN antibody, DEAD (Asp-Glu-Ala-Asp) box polypeptide 52 antibody, DEAD box protein 52 antibody, Human sequence similar to yeast 19 antibody, HUSSY19 antibody, Probable ATP dependent RNA helicase DDX52 antibody, Probable ATP-dependent RNA helicase DDX52 antibody, ROK1 antibody, ROK1, S. cerevisiae, homolog of antibody

UniProt: [Q9Y2R4](#)

## Application Details

Application Notes: WB:1:500-1:2000, IHC:1:100-1:300, ELISA:1:40000,

Restrictions: For Research Use only

## Handling

Format: Liquid

Buffer: Liquid in PBS containing 50 % glycerol, 0.5 % BSA and 0.02 % sodium azide.

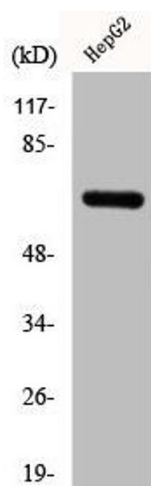
Preservative: Sodium azide

Precaution of Use: This product contains Sodium azide: a POISONOUS AND HAZARDOUS SUBSTANCE which should be handled by trained staff only.

Storage: -20 °C,-80 °C

Storage Comment: Upon receipt, store at -20°C or -80°C. Avoid repeated freeze.

## Images



### Western Blotting

**Image 1.** Western Blot analysis of HepG2 cells using DDX52 Polyclonal Antibody