



[Go to Product page](#)

Datasheet for ABIN7184826

anti-POLD3 antibody (C-Term)

1 Image

Overview

Quantity:	100 µg
Target:	POLD3
Binding Specificity:	C-Term
Reactivity:	Human
Host:	Rabbit
Clonality:	Polyclonal
Conjugate:	This POLD3 antibody is un-conjugated
Application:	Western Blotting (WB), ELISA

Product Details

Immunogen:	Synthesized peptide derived from the C-terminal region of Human DNA pol delta3.
Isotype:	IgG
Cross-Reactivity:	Human, Mouse, Rat
Purification:	The antibody was affinity-purified from rabbit antiserum by affinity-chromatography using epitope-specific immunogen.

Target Details

Target:	POLD3
Alternative Name:	POLD3 (POLD3 Products)
Background:	DNA polymerase delta subunit 3 antibody, DNA polymerase delta subunit p66 antibody, DNA

Target Details

polymerase delta, subunit 3 antibody, DNA polymerase subunit delta p66 antibody, DPOD3_HUMAN antibody, KIAA0039 antibody, P66 antibody, P68 antibody, Pol delta C subunit (p66) antibody, Pold3 antibody, Polymerase (DNA directed), delta 3 antibody, Polymerase (DNA-directed), delta 3, accessory subunit antibody, PPP1R128 antibody, Protein phosphatase 1, regulatory subunit 128 antibody

UniProt: [Q15054](#)

Pathways: [Telomere Maintenance](#), [DNA Damage Repair](#), [DNA Replication](#), [Synthesis of DNA](#)

Application Details

Application Notes: WB:1:500-1:2000, ELISA:1:20000,

Restrictions: For Research Use only

Handling

Format: Liquid

Buffer: Liquid in PBS containing 50 % glycerol, 0.5 % BSA and 0.02 % sodium azide.

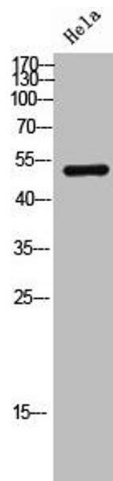
Preservative: Sodium azide

Precaution of Use: This product contains Sodium azide: a POISONOUS AND HAZARDOUS SUBSTANCE which should be handled by trained staff only.

Storage: -20 °C,-80 °C

Storage Comment: Upon receipt, store at -20°C or -80°C. Avoid repeated freeze.

Images



Western Blotting

Image 1. Western Blot analysis of hela cells using DNA pol δ 3 Polyclonal Antibody