



[Go to Product page](#)

Datasheet for ABIN7184827  
**anti-POLL antibody (C-Term)**

1 Image

Overview

|                      |  |
|----------------------|--|
| Quantity:            | 100 µg   |
| Target:              | POLL   |
| Binding Specificity: | C-Term   |
| Reactivity:          | Human  |
| Host:                | Rabbit   |
| Clonality:           | Polyclonal   |
| Conjugate:           | This POLL antibody is un-conjugated                      |
| Application:         | Western Blotting (WB), ELISA, Immunohistochemistry (IHC) |

Product Details

|                   |   |
|-------------------|---|
| Immunogen:        | Synthesized peptide derived from the C-terminal region of Human DNA pol lambda.                                       |
| Isotype:          | IgG   |
| Cross-Reactivity: | Human, Mouse, Rat   |
| Purification:     | The antibody was affinity-purified from rabbit antiserum by affinity-chromatography using epitope-specific immunogen. |

Target Details

|                   |   |
|-------------------|---|
| Target:           | POLL  |
| Alternative Name: | POLL ( <a href="#">POLL Products</a> )  |
| Background:       | BETA N antibody, BETAN antibody, DNA directed DNA polymerase lambda antibody, DNA |

## Target Details

---

polymerase beta 2 antibody, DNA polymerase beta-2 antibody, DNA polymerase kappa antibody, DNA polymerase kappa DNA polymerase beta N antibody, DNA polymerase lambda antibody, DNA polymerase lamda2 antibody, DPOLL\_HUMAN antibody, EC 2.7.7.7,EC 4.2.99. antibody, FLJ46002 antibody, OTTHUMP00000020321 antibody, OTTHUMP00000020323 antibody, OTTHUMP00000059179 antibody, Pol beta2 antibody, POL KAPPA antibody, Pol Lambda antibody, POLKAPPA antibody, POLL antibody, Polymerase DNA directed lambda antibody

UniProt: [Q9UGP5](#)

Pathways: [DNA Damage Repair](#), [Production of Molecular Mediator of Immune Response](#)

## Application Details

---

Application Notes: WB:1:500-1:2000, IHC:1:100-1:300, ELISA:1:10000,

Restrictions: For Research Use only

## Handling

---

Format: Liquid

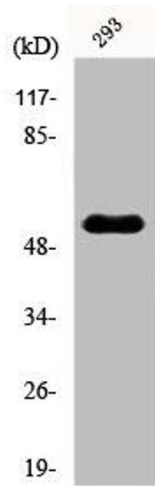
Buffer: Liquid in PBS containing 50 % glycerol, 0.5 % BSA and 0.02 % sodium azide.

Preservative: Sodium azide

Precaution of Use: This product contains Sodium azide: a POISONOUS AND HAZARDOUS SUBSTANCE which should be handled by trained staff only.

Storage: -20 °C,-80 °C

Storage Comment: Upon receipt, store at -20°C or -80°C. Avoid repeated freeze.



### Western Blotting

**Image 1.** Western Blot analysis of 293 cells using POLL Polyclonal Antibody