

Datasheet for ABIN7184833
anti-DQX1 antibody (C-Term)



[Go to Product page](#)

1 Image

Overview

Quantity:	100 µg
Target:	DQX1
Binding Specificity:	C-Term
Reactivity:	Human
Host:	Rabbit
Clonality:	Polyclonal
Conjugate:	This DQX1 antibody is un-conjugated
Application:	Western Blotting (WB), ELISA

Product Details

Immunogen:	Synthesized peptide derived from the C-terminal region of Human DQX1.
Isotype:	IgG
Cross-Reactivity:	Human, Monkey, Mouse
Purification:	The antibody was affinity-purified from rabbit antiserum by affinity-chromatography using epitope-specific immunogen.

Target Details

Target:	DQX1
Alternative Name:	DQX1 (DQX1 Products)
Background:	ATP dependent RNA helicase DQX1 antibody, ATP-dependent RNA helicase DQX1 antibody,

Target Details

DEAQ box 1 antibody, DEAQ box polypeptide 1 (RNA dependent ATPase) antibody, DEAQ box polypeptide 1 antibody, DEAQ RNA dependent ATPase antibody, DQX1 antibody, DQX1_HUMAN antibody, EC3.6.1 antibody, FLJ23757 antibody

UniProt: [Q8TE96](#)

Application Details

Application Notes: WB:1:500-1:2000, ELISA:1:20000,

Restrictions: For Research Use only

Handling

Format: Liquid

Buffer: Liquid in PBS containing 50 % glycerol, 0.5 % BSA and 0.02 % sodium azide.

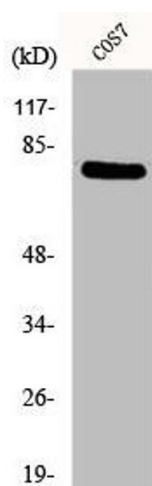
Preservative: Sodium azide

Precaution of Use: This product contains Sodium azide: a POISONOUS AND HAZARDOUS SUBSTANCE which should be handled by trained staff only.

Storage: -20 °C,-80 °C

Storage Comment: Upon receipt, store at -20°C or -80°C. Avoid repeated freeze.

Images



Western Blotting

Image 1. Western Blot analysis of COS7 cells using DQX1 Polyclonal Antibody