

Datasheet for ABIN7184835
anti-SLC26A3 antibody (C-Term)[Go to Product page](#)

1 Image

Overview

Quantity:	100 µg
Target:	SLC26A3
Binding Specificity:	C-Term
Reactivity:	Human
Host:	Rabbit
Clonality:	Polyclonal
Conjugate:	This SLC26A3 antibody is un-conjugated
Application:	Western Blotting (WB), ELISA

Product Details

Immunogen:	Synthesized peptide derived from the C-terminal region of Human DRA.
Isotype:	IgG
Cross-Reactivity:	Human, Mouse, Rat
Purification:	The antibody was affinity-purified from rabbit antiserum by affinity-chromatography using epitope-specific immunogen.

Target Details

Target:	SLC26A3
Alternative Name:	SLC26A3 (SLC26A3 Products)
Background:	Chloride anion exchanger antibody, CLD antibody, Congenital chloride diarrhea antibody, Down

Target Details

regulated in adenoma antibody, Down regulated in adenoma protein antibody, Down-regulated in adenoma antibody, DRA antibody, Protein DRA antibody, S26A3_HUMAN antibody, SLC26A3 antibody, Solute carrier family 26 member 3 antibody

UniProt: [P40879](#)

Application Details

Application Notes: WB:1:500-1:2000, ELISA:1:20000,

Restrictions: For Research Use only

Handling

Format: Liquid

Buffer: Liquid in PBS containing 50 % glycerol, 0.5 % BSA and 0.02 % sodium azide.

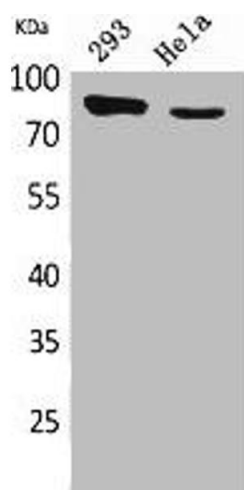
Preservative: Sodium azide

Precaution of Use: This product contains Sodium azide: a POISONOUS AND HAZARDOUS SUBSTANCE which should be handled by trained staff only.

Storage: -20 °C,-80 °C

Storage Comment: Upon receipt, store at -20°C or -80°C. Avoid repeated freeze.

Images



Western Blotting

Image 1. Western Blot analysis of 293, HeLa cells using DRA Polyclonal Antibody.