



Datasheet for ABIN7184858
anti-KLF1/5/7 antibody (C-Term)



[Go to Product page](#)

2 Images

Overview

Quantity:	100 µg
Target:	KLF1/5/7
Binding Specificity:	C-Term
Reactivity:	Human
Host:	Rabbit
Clonality:	Polyclonal
Conjugate:	This KLF1/5/7 antibody is un-conjugated
Application:	Western Blotting (WB), Immunofluorescence (IF), ELISA

Product Details

Immunogen:	Synthesized peptide derived from the C-terminal region of Human EKLF/CKLF/UKLF.
Isotype:	IgG
Cross-Reactivity:	Human, Mouse, Rat
Purification:	The antibody was affinity-purified from rabbit antiserum by affinity-chromatography using epitope-specific immunogen.

Target Details

Target:	KLF1/5/7
Alternative Name:	KLF1/KLF5/KLF7 (KLF1/5/7 Products)
Background:	KLF1, EKLF, Krueppel-like factor 1, Erythroid krueppel-like transcription factor, EKLF, KLF5,

Target Details

BTEB2, CKLF, IKLF, Krueppel-like factor 5, Basic transcription element-binding protein 2, BTE-binding protein 2, Colon krueppel-like factor, GC-bo

UniProt: [Q13351](#), [Q13887](#), [O75840](#)

Application Details

Application Notes: WB:1:500-1:2000, IF:1:200-1:1000, ELISA:1:20000,

Restrictions: For Research Use only

Handling

Format: Liquid

Buffer: Liquid in PBS containing 50 % glycerol, 0.5 % BSA and 0.02 % sodium azide.

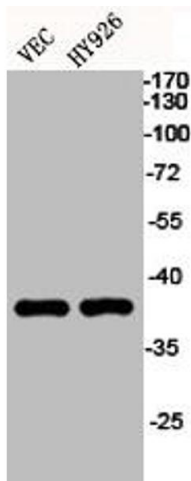
Preservative: Sodium azide

Precaution of Use: This product contains Sodium azide: a POISONOUS AND HAZARDOUS SUBSTANCE which should be handled by trained staff only.

Storage: -20 °C, -80 °C

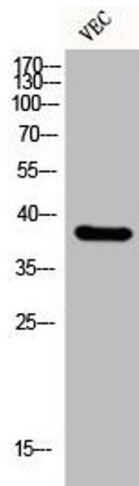
Storage Comment: Upon receipt, store at -20°C or -80°C. Avoid repeated freeze.

Images



Western Blotting

Image 1. Western Blot analysis of VEC HY926 cells using EKLF/CKLF/UKLF Polyclonal Antibody



Western Blotting

Image 2. Western Blot analysis of VEC cells using EKLF/CKLF/UKLF Polyclonal Antibody