

Datasheet for ABIN7184864
anti-CD147 antibody (C-Term)



[Go to Product page](#)

2 Images

Overview

Quantity:	100 µg
Target:	CD147 (BSG)
Binding Specificity:	C-Term
Reactivity:	Human
Host:	Rabbit
Clonality:	Polyclonal
Conjugate:	This CD147 antibody is un-conjugated
Application:	Western Blotting (WB), Immunohistochemistry (IHC), ELISA

Product Details

Immunogen:	Synthesized peptide derived from the C-terminal region of Human EMMPRIN.
Isotype:	IgG
Cross-Reactivity:	Human, Mouse, Rat
Purification:	The antibody was affinity-purified from rabbit antiserum by affinity-chromatography using epitope-specific immunogen.

Target Details

Target:	CD147 (BSG)
Alternative Name:	BSG (BSG Products)
Background:	5A11 antigen antibody, 5F7 antibody, BASI_HUMAN antibody, Basigin (Ok blood group)

Target Details

antibody, Basigin antibody, Blood brain barrier HT7 antigen antibody, Bsg antibody, CD 147 antibody, CD147 antibody, CD147 antigen antibody, Collagenase stimulatory factor antibody, EMMPRIN antibody, Extracellular matrix metalloproteinase inducer antibody, Leukocyte activation antigen M6 antibody, M 6 antibody, M6 antibody, M6 leukocyte activation antigen antibody, Neurothelin antibody, OK antibody, OK blood group antibody, OK blood group antigen antibody, TCSF antibody, Tumor cell derived collagenase stimulatory factor antibody, Tumor cell-derived collagenase stimulatory factor antibody

UniProt: [P35613](#)

Pathways: [S100 Proteins](#)

Application Details

Application Notes: WB:1:500-1:2000, IHC:1:100-1:300, ELISA:1:10000,

Restrictions: For Research Use only

Handling

Format: Liquid

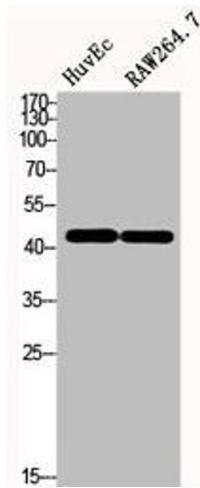
Buffer: Liquid in PBS containing 50 % glycerol, 0.5 % BSA and 0.02 % sodium azide.

Preservative: Sodium azide

Precaution of Use: This product contains Sodium azide: a POISONOUS AND HAZARDOUS SUBSTANCE which should be handled by trained staff only.

Storage: -20 °C,-80 °C

Storage Comment: Upon receipt, store at -20°C or -80°C. Avoid repeated freeze.



Western Blotting

Image 1. Western Blot analysis of HuvEc RAW264.7 cells using EMMPRIN Polyclonal Antibody



Western Blotting

Image 2. Western Blot analysis of HEPG2-UV cells using EMMPRIN Polyclonal Antibody