



Datasheet for ABIN7184866  
**anti-ADGRE2 antibody (C-Term)**



[Go to Product page](#)

1 Image

Overview

Quantity:	100 µg
Target:	ADGRE2
Binding Specificity:	C-Term
Reactivity:	Human
Host:	Rabbit
Clonality:	Polyclonal
Conjugate:	This ADGRE2 antibody is un-conjugated
Application:	ELISA, Western Blotting (WB), Immunofluorescence (IF)

Product Details

Immunogen:	Synthesized peptide derived from the C-terminal region of Human EMR2.
Isotype:	IgG
Cross-Reactivity:	Human
Purification:	The antibody was affinity-purified from rabbit antiserum by affinity-chromatography using epitope-specific immunogen.

Target Details

Target:	ADGRE2
Alternative Name:	ADGRE2 ( <a href="#">ADGRE2 Products</a> )
Background:	CD 312 antibody, CD 312 antigen antibody, CD312 antibody, CD312 antigen antibody, Egf like

## Target Details

module containing mucin like hormone receptor like 2 antibody, Egf like module containing mucin like hormone receptor like sequence 2 antibody, EGF like module EMR2 antibody, EGF-like module receptor 2 antibody, EGF-like module-containing mucin-like hormone receptor-like 2 antibody, EMR2 antibody, EMR2\_HUMAN antibody

UniProt: [Q9UHX3](#)

## Application Details

Application Notes: WB:1:500-1:2000, IF:1:200-1:1000, ELISA:1:20000,

Restrictions: For Research Use only

## Handling

Format: Liquid

Buffer: Liquid in PBS containing 50 % glycerol, 0.5 % BSA and 0.02 % sodium azide.

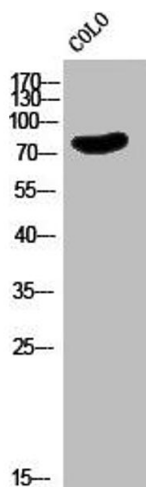
Preservative: Sodium azide

Precaution of Use: This product contains Sodium azide: a POISONOUS AND HAZARDOUS SUBSTANCE which should be handled by trained staff only.

Storage: -20 °C,-80 °C

Storage Comment: Upon receipt, store at -20°C or -80°C. Avoid repeated freeze.

## Images



### Western Blotting

**Image 1.** Western Blot analysis of COLO cells using EMR2 Polyclonal Antibody