



[Go to Product page](#)

Datasheet for ABIN7184868
anti-EMX1 antibody (C-Term)

1 Image

Overview

Quantity:	100 µg
Target:	EMX1
Binding Specificity:	C-Term
Reactivity:	Human
Host:	Rabbit
Clonality:	Polyclonal
Conjugate:	This EMX1 antibody is un-conjugated
Application:	Western Blotting (WB), ELISA

Product Details

Immunogen:	Synthesized peptide derived from the C-terminal region of Human Emx1.
Isotype:	IgG
Cross-Reactivity:	Human, Mouse, Rat
Purification:	The antibody was affinity-purified from rabbit antiserum by affinity-chromatography using epitope-specific immunogen.

Target Details

Target:	EMX1
Alternative Name:	EMX1 (EMX1 Products)
Background:	Empty spiracles homeobox 1 antibody, Empty spiracles homolog 1 antibody, empty spiracles

Target Details

homolog 1 Drosophila antibody, Empty spiracles like protein 1 antibody, Empty spiracles-like protein 1 antibody, EMX1 antibody, EMX1_HUMAN antibody, Homeobox protein EMX1 antibody

UniProt: [Q04741](#)

Application Details

Application Notes: WB:1:500-1:2000, ELISA:1:40000,

Restrictions: For Research Use only

Handling

Format: Liquid

Buffer: Liquid in PBS containing 50 % glycerol, 0.5 % BSA and 0.02 % sodium azide.

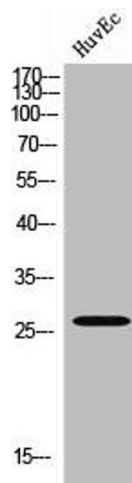
Preservative: Sodium azide

Precaution of Use: This product contains Sodium azide: a POISONOUS AND HAZARDOUS SUBSTANCE which should be handled by trained staff only.

Storage: -20 °C,-80 °C

Storage Comment: Upon receipt, store at -20°C or -80°C. Avoid repeated freeze.

Images



Western Blotting

Image 1. Western Blot analysis of HuvEC cells using Emx1 Polyclonal Antibody