



[Go to Product page](#)

Datasheet for ABIN7184873
anti-PTGER2 antibody (C-Term)

1 Image

Overview

Quantity:	100 µg
Target:	PTGER2
Binding Specificity:	C-Term
Reactivity:	Human
Host:	Rabbit
Clonality:	Polyclonal
Conjugate:	This PTGER2 antibody is un-conjugated
Application:	Western Blotting (WB), ELISA, Immunofluorescence (IF)

Product Details

Immunogen:	Synthesized peptide derived from the C-terminal region of Human EP2.
Isotype:	IgG
Cross-Reactivity:	Human, Mouse, Rat
Purification:	The antibody was affinity-purified from rabbit antiserum by affinity-chromatography using epitope-specific immunogen.

Target Details

Target:	PTGER2
Alternative Name:	PTGER2 (PTGER2 Products)
Background:	EP2 antibody, PE2R2_HUMAN antibody, PGE receptor EP2 subtype antibody, PGE2 receptor

Target Details

EP2 subtype antibody, Prostaglandin E receptor 2 EP2 subtype antibody, Prostaglandin E receptor 2 subtype EP2 53 kDa antibody, Prostaglandin E receptor 2 subtype EP2 antibody, Prostaglandin E2 receptor antibody, Prostaglandin E2 receptor EP2 subtype antibody, Prostanoid EP2 receptor antibody, Ptger2 antibody

UniProt: [P43116](#)

Application Details

Application Notes: WB:1:500-1:2000, IF:1:200-1:1000, ELISA:1:10000,

Restrictions: For Research Use only

Handling

Format: Liquid

Buffer: Liquid in PBS containing 50 % glycerol, 0.5 % BSA and 0.02 % sodium azide.

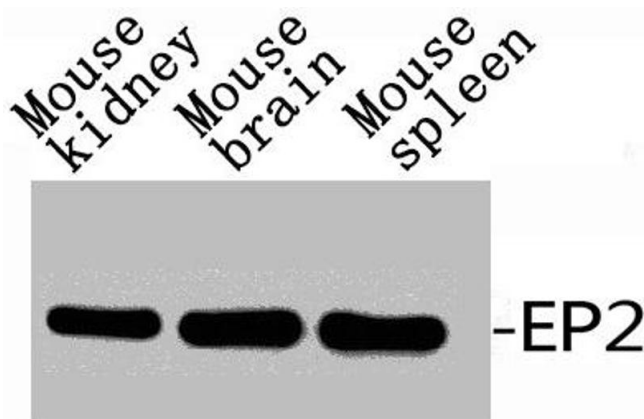
Preservative: Sodium azide

Precaution of Use: This product contains Sodium azide: a POISONOUS AND HAZARDOUS SUBSTANCE which should be handled by trained staff only.

Storage: -20 °C,-80 °C

Storage Comment: Upon receipt, store at -20°C or -80°C. Avoid repeated freeze.

Images



Western Blotting

Image 1. Western Blot analysis of RAT-KIDNEY MOUSE-BRAIN MOUSE-HEART using EP2 Polyclonal Antibody.