



[Go to Product page](#)

Datasheet for ABIN7184909

anti-Fibronectin 1 antibody (C-Term)

3 Images

Overview

Quantity:	100 µg
Target:	Fibronectin 1 (FN1)
Binding Specificity:	C-Term
Reactivity:	Human
Host:	Rabbit
Clonality:	Polyclonal
Conjugate:	This Fibronectin 1 antibody is un-conjugated
Application:	Western Blotting (WB), ELISA, Immunohistochemistry (IHC)

Product Details

Immunogen:	Synthesized peptide derived from the C-terminal region of Human FN1.
Isotype:	IgG
Cross-Reactivity:	Human, Mouse, Rat
Purification:	The antibody was affinity-purified from rabbit antiserum by affinity-chromatography using epitope-specific immunogen.

Target Details

Target:	Fibronectin 1 (FN1)
Alternative Name:	FN1 (FN1 Products)
Background:	CIG antibody, Cold insoluble globulin antibody, Cold-insoluble globulin antibody,

Target Details

DKFZp686F10164 antibody, DKFZp686H0342 antibody, DKFZp686I1370 antibody, DKFZp686O13149 antibody, ED B antibody, Fibronectin 1 antibody, FINC antibody, FINC_HUMAN antibody, FN antibody, FN1 antibody, FNZ antibody, GFND antibody, GFND2 antibody, LETS antibody, Migration stimulating factor antibody, MSF antibody, Ugl-Y3 antibody

UniProt: [P02751](#)

Pathways: [Cellular Response to Molecule of Bacterial Origin](#), [Carbohydrate Homeostasis](#), [Autophagy](#)

Application Details

Application Notes: WB:1:500-1:2000, IHC:1:100-1:300, ELISA:1:20000,

Restrictions: For Research Use only

Handling

Format: Liquid

Buffer: Liquid in PBS containing 50 % glycerol, 0.5 % BSA and 0.02 % sodium azide.

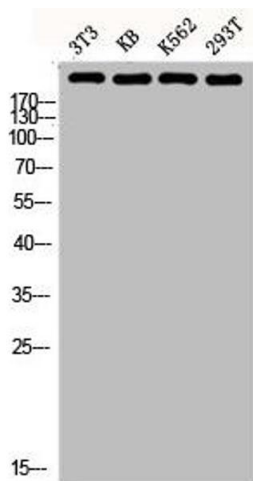
Preservative: Sodium azide

Precaution of Use: This product contains Sodium azide: a POISONOUS AND HAZARDOUS SUBSTANCE which should be handled by trained staff only.

Storage: -20 °C,-80 °C

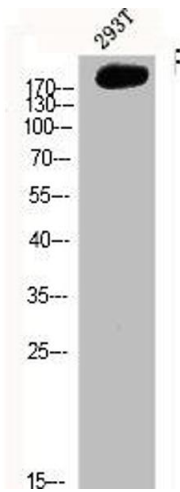
Storage Comment: Upon receipt, store at -20°C or -80°C. Avoid repeated freeze.

Images



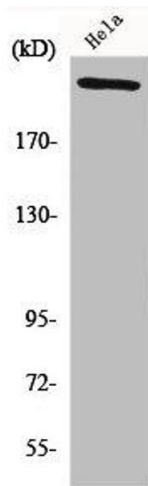
Western Blotting

Image 1. Western blot analysis of 3T3 KB K562 293T lysis using FN1 antibody.



Western Blotting

Image 2. Western Blot analysis of 293T cells using FN1 Polyclonal Antibody



Western Blotting

Image 3. Western Blot analysis of HeLa cells using FN1 Polyclonal Antibody