

Datasheet for ABIN7184947
anti-GDF3 antibody (C-Term)



[Go to Product page](#)

2 Images

Overview

Quantity:	100 µg
Target:	GDF3
Binding Specificity:	C-Term
Reactivity:	Human
Host:	Rabbit
Clonality:	Polyclonal
Conjugate:	This GDF3 antibody is un-conjugated
Application:	Western Blotting (WB), ELISA

Product Details

Immunogen:	Synthesized peptide derived from the C-terminal region of Human GDF-3.
Isotype:	IgG
Cross-Reactivity:	Human
Purification:	The antibody was affinity-purified from rabbit antiserum by affinity-chromatography using epitope-specific immunogen.

Target Details

Target:	GDF3
Alternative Name:	GDF3 (GDF3 Products)
Background:	C78318 antibody, ecat9 antibody, GDF 3 antibody, GDF-3 antibody, GDF3 antibody,

Target Details

GDF3_HUMAN antibody, Growth differentiation factor 3 antibody, Growth/differentiation factor 3 antibody, KFS3 antibody, MCOP7 antibody, MCOPCB6 antibody, MGC123990 antibody, MGC123991 antibody, RGD1564178 antibody, Vgr 2 antibody, Vgr2 antibody

UniProt: [Q9NR23](#)

Application Details

Application Notes: WB:1:500-1:2000, ELISA:1:10000,

Restrictions: For Research Use only

Handling

Format: Liquid

Buffer: Liquid in PBS containing 50 % glycerol, 0.5 % BSA and 0.02 % sodium azide.

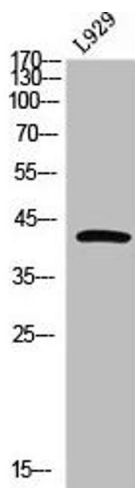
Preservative: Sodium azide

Precaution of Use: This product contains Sodium azide: a POISONOUS AND HAZARDOUS SUBSTANCE which should be handled by trained staff only.

Storage: -20 °C,-80 °C

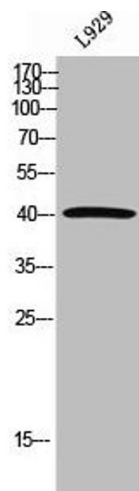
Storage Comment: Upon receipt, store at -20°C or -80°C. Avoid repeated freeze.

Images



Western Blotting

Image 1. Western Blot analysis of L929 cells using GDF-3 Polyclonal Antibody



Western Blotting

Image 2. Western Blot analysis of L929 cells using GDF-3 Polyclonal Antibody