



[Go to Product page](#)

Datasheet for ABIN7184950
anti-GDI2 antibody (C-Term)

1 Image

Overview

Quantity:	100 µg
Target:	GDI2
Binding Specificity:	C-Term
Reactivity:	Human
Host:	Rabbit
Clonality:	Polyclonal
Conjugate:	This GDI2 antibody is un-conjugated
Application:	Western Blotting (WB), ELISA

Product Details

Immunogen:	Synthesized peptide derived from the C-terminal region of Human GDI-2.
Isotype:	IgG
Cross-Reactivity:	Human, Mouse, Rat
Purification:	The antibody was affinity-purified from rabbit antiserum by affinity-chromatography using epitope-specific immunogen.

Target Details

Target:	GDI2
Alternative Name:	GDI2 (GDI2 Products)
Background:	GDI-2 antibody, GDI2 antibody, GDIB_HUMAN antibody, GDP dissociation inhibitor 2 antibody,

Target Details

Guanosine diphosphate dissociation inhibitor 2 antibody, Rab GDI beta antibody, Rab GDP dissociation inhibitor beta antibody, RABGDIB antibody

UniProt: [P50395](#)

Application Details

Application Notes: WB:1:500-1:2000, ELISA:1:20000,

Restrictions: For Research Use only

Handling

Format: Liquid

Buffer: Liquid in PBS containing 50 % glycerol, 0.5 % BSA and 0.02 % sodium azide.

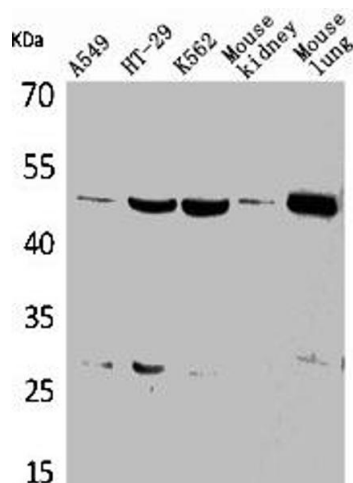
Preservative: Sodium azide

Precaution of Use: This product contains Sodium azide: a POISONOUS AND HAZARDOUS SUBSTANCE which should be handled by trained staff only.

Storage: -20 °C,-80 °C

Storage Comment: Upon receipt, store at -20°C or -80°C. Avoid repeated freeze.

Images



Western Blotting

Image 1. Western Blot analysis of A549 HT29 K562 mouse kidney mouse lung cells using GDI-2 Polyclonal Antibody