

Datasheet for ABIN7184954
anti-GIMAP5 antibody (C-Term)[Go to Product page](#)

1 Image

Overview

| | |
|----------------------|--|
| Quantity: | 100 µg |
| Target: | GIMAP5 |
| Binding Specificity: | C-Term |
| Reactivity: | Human |
| Host: | Rabbit |
| Clonality: | Polyclonal |
| Conjugate: | This GIMAP5 antibody is un-conjugated |
| Application: | Western Blotting (WB), ELISA, Immunohistochemistry (IHC) |

Product Details

| | |
|-------------------|---|
| Immunogen: | Synthesized peptide derived from the C-terminal region of Human GIMAP5. |
| Isotype: | IgG |
| Cross-Reactivity: | Human |
| Purification: | The antibody was affinity-purified from rabbit antiserum by affinity-chromatography using epitope-specific immunogen. |

Target Details

| | |
|-------------------|--|
| Target: | GIMAP5 |
| Alternative Name: | GIMAP5 (GIMAP5 Products) |
| Background: | FLJ11296 antibody, GIMA5_HUMAN antibody, GIMAP 5 antibody, GIMAP5 antibody, GTPase |

Target Details

IMAP family member 5 antibody, hIAN5 antibody, HIMAP3 antibody, IAN 5 antibody, IAN4 antibody, IAN4L1 antibody, IAN5 antibody, IMAP3 antibody, Immune associated nucleotide 4 like 1 antibody, Immunity associated nucleotide 4 like 1 protein antibody, Immunity associated protein 3 antibody

| | |
|-----------|--|
| UniProt: | Q96F15 |
| Pathways: | Regulation of Leukocyte Mediated Immunity , Positive Regulation of Immune Effector Process , Production of Molecular Mediator of Immune Response |

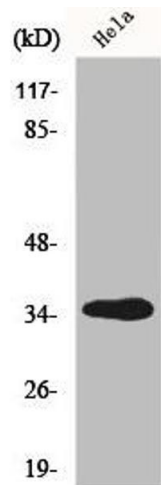
Application Details

| | |
|--------------------|--|
| Application Notes: | WB:1:500-1:2000, IHC:1:100-1:300, ELISA:1:20000, |
| Restrictions: | For Research Use only |

Handling

| | |
|--------------------|--|
| Format: | Liquid |
| Buffer: | Liquid in PBS containing 50 % glycerol, 0.5 % BSA and 0.02 % sodium azide. |
| Preservative: | Sodium azide |
| Precaution of Use: | This product contains Sodium azide: a POISONOUS AND HAZARDOUS SUBSTANCE which should be handled by trained staff only. |
| Storage: | -20 °C,-80 °C |
| Storage Comment: | Upon receipt, store at -20°C or -80°C. Avoid repeated freeze. |

Images



Western Blotting

Image 1. Western Blot analysis of HT29 cells using GIMAP5 Polyclonal Antibody