

Datasheet for ABIN7184959  
**anti-GLUT1 antibody (C-Term)**

## 2 Images

[Go to Product page](#)

## Overview

Quantity:	100 µg
Target:	GLUT1 (SLC2A1)
Binding Specificity:	C-Term
Reactivity:	Human
Host:	Rabbit
Clonality:	Polyclonal
Conjugate:	This GLUT1 antibody is un-conjugated
Application:	Western Blotting (WB), Immunohistochemistry (IHC), ELISA

## Product Details

Immunogen:	Synthesized peptide derived from the C-terminal region of Human Glut1.
Isotype:	IgG
Cross-Reactivity:	Human, Mouse, Rat
Purification:	The antibody was affinity-purified from rabbit antiserum by affinity-chromatography using epitope-specific immunogen.

## Target Details

Target:	GLUT1 (SLC2A1)
Alternative Name:	SLC2A1 ( <a href="#">SLC2A1 Products</a> )
Background:	Choreoathetosis/spasticity episodic (paroxysmal choreoathetosis/spasticity) antibody, CSE

## Target Details

antibody, DYT17 antibody, DYT18 antibody, DYT9 antibody, EIG12 antibody, erythrocyte/brain antibody, Erythrocyte/hepatoma glucose transporter antibody, facilitated glucose transporter member 1 antibody, Glucose transporter 1 antibody, Glucose transporter type 1 antibody, Glucose transporter type 1, erythrocyte/brain antibody, GLUT antibody, GLUT-1 antibody, GLUT1 antibody, GLUT1DS antibody, GLUTB antibody, GT1 antibody, GTG1 antibody, Gtg3 antibody, GTR1\_HUMAN antibody, HepG2 glucose transporter antibody, HTLVR antibody, Human T cell leukemia virus (I and II) receptor antibody, MGC141895 antibody, MGC141896 antibody, PED antibody, RATGTG1 antibody, Receptor for HTLV 1 and HTLV 2 antibody, SLC2A1 antibody, Solute carrier family 2 (facilitated glucose transporter), member 1 antibody, Solute carrier family 2 antibody, Solute carrier family 2, facilitated glucose transporter member 1 antibody

UniProt: [P11166](#)

Pathways: [Sensory Perception of Sound](#), [Dicarboxylic Acid Transport](#), [Warburg Effect](#)

## Application Details

Application Notes: WB:1:500-1:2000, IHC:1:100-1:300, ELISA:1:40000,

Restrictions: For Research Use only

## Handling

Format: Liquid

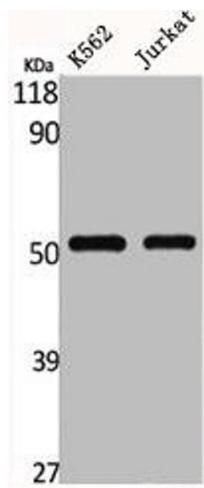
Buffer: Liquid in PBS containing 50 % glycerol, 0.5 % BSA and 0.02 % sodium azide.

Preservative: Sodium azide

Precaution of Use: This product contains Sodium azide: a POISONOUS AND HAZARDOUS SUBSTANCE which should be handled by trained staff only.

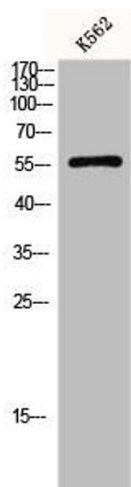
Storage: -20 °C,-80 °C

Storage Comment: Upon receipt, store at -20°C or -80°C. Avoid repeated freeze.



Western Blotting

**Image 1.** Western Blot analysis of K562 Jurkat cells using Glut1 Polyclonal Antibody



Western Blotting

**Image 2.** Western Blot analysis of K562 cells using Glut1 Polyclonal Antibody