



[Go to Product page](#)

Datasheet for ABIN7184985

anti-GPR75 antibody (C-Term)

1 Image

Overview

Quantity:	100 µg
Target:	GPR75
Binding Specificity:	C-Term
Reactivity:	Human
Host:	Rabbit
Clonality:	Polyclonal
Conjugate:	This GPR75 antibody is un-conjugated
Application:	Western Blotting (WB), ELISA, Immunofluorescence (IF)

Product Details

Immunogen:	Synthesized peptide derived from the C-terminal region of Human GPR75.
Isotype:	IgG
Cross-Reactivity:	Human, Mouse
Purification:	The antibody was affinity-purified from rabbit antiserum by affinity-chromatography using epitope-specific immunogen.

Target Details

Target:	GPR75
Alternative Name:	GPR75 (GPR75 Products)
Background:	G protein coupled receptor 75 antibody, GPR chr2 antibody, Gpr75 antibody, GPR75_HUMAN

Target Details

antibody, GPRchr2 antibody, OTTHUMP00000159608 antibody, Probable G protein coupled receptor 75 antibody, Probable G-protein coupled receptor 75 antibody, WI 31133 antibody, WI31133 antibody

UniProt: [O95800](#)

Application Details

Application Notes: WB:1:500-1:2000, IF:1:200-1:1000, ELISA:1:5000,

Restrictions: For Research Use only

Handling

Format: Liquid

Buffer: Liquid in PBS containing 50 % glycerol, 0.5 % BSA and 0.02 % sodium azide.

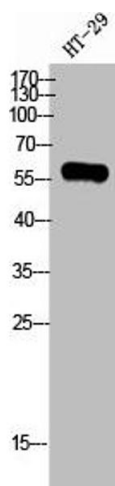
Preservative: Sodium azide

Precaution of Use: This product contains Sodium azide: a POISONOUS AND HAZARDOUS SUBSTANCE which should be handled by trained staff only.

Storage: -20 °C,-80 °C

Storage Comment: Upon receipt, store at -20°C or -80°C. Avoid repeated freeze.

Images



Western Blotting

Image 1. Western Blot analysis of HT-29 cells using GPR75 Polyclonal Antibody