

Datasheet for ABIN7185015
anti-Homeobox C6 antibody (C-Term)



[Go to Product page](#)

1 Image

Overview

Quantity:	100 µg
Target:	Homeobox C6 (HOXC6)
Binding Specificity:	C-Term
Reactivity:	Human
Host:	Rabbit
Clonality:	Polyclonal
Conjugate:	This Homeobox C6 antibody is un-conjugated
Application:	Western Blotting (WB), ELISA, Immunofluorescence (IF), Immunohistochemistry (IHC)

Product Details

Immunogen:	Synthesized peptide derived from the C-terminal region of Human Hox-C6.
Isotype:	IgG
Cross-Reactivity:	Human, Mouse
Purification:	The antibody was affinity-purified from rabbit antiserum by affinity-chromatography using epitope-specific immunogen.

Target Details

Target:	Homeobox C6 (HOXC6)
Alternative Name:	HOXC6 (HOXC6 Products)
Background:	CP25 antibody, HHO.C8 antibody, Homeo box 3C antibody, Homeo box C6 antibody, Homeo

Target Details

box C8 protein antibody, Homeobox C6 antibody, Homeobox protein CP25 antibody, Homeobox protein HHO.C8 antibody, Homeobox protein Hox-3C antibody, Homeobox protein Hox-C6 antibody, HOX3 antibody, HOX3C antibody, Hoxc6 antibody, HXC6_HUMAN antibody

UniProt: [P09630](#)

Application Details

Application Notes: WB:1:500-1:2000, IHC:1:100-1:300, IF:1:200-1:1000, ELISA:1:10000,

Restrictions: For Research Use only

Handling

Format: Liquid

Buffer: Liquid in PBS containing 50 % glycerol, 0.5 % BSA and 0.02 % sodium azide.

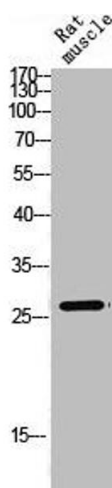
Preservative: Sodium azide

Precaution of Use: This product contains Sodium azide: a POISONOUS AND HAZARDOUS SUBSTANCE which should be handled by trained staff only.

Storage: -20 °C,-80 °C

Storage Comment: Upon receipt, store at -20°C or -80°C. Avoid repeated freeze.

Images



Western Blotting

Image 1. Western Blot analysis of RAT-MUSCLE cells using Hox-C6 Polyclonal Antibody