



[Go to Product page](#)

Datasheet for ABIN7185020  
**anti-EIF2AK1 antibody (C-Term)**

1 Image

### Overview

Quantity:	100 µg
Target:	EIF2AK1
Binding Specificity:	C-Term
Reactivity:	Human
Host:	Rabbit
Clonality:	Polyclonal
Conjugate:	This EIF2AK1 antibody is un-conjugated
Application:	Western Blotting (WB), ELISA, Immunohistochemistry (IHC)

### Product Details

Immunogen:	Synthesized peptide derived from the C-terminal region of Human HRI.
Isotype:	IgG
Cross-Reactivity:	Human, Monkey, Mouse
Purification:	The antibody was affinity-purified from rabbit antiserum by affinity-chromatography using epitope-specific immunogen.

### Target Details

Target:	EIF2AK1
Alternative Name:	EIF2AK1 ( <a href="#">EIF2AK1 Products</a> )
Background:	E2AK1_HUMAN antibody, EC 2.7.11.1 antibody, Eif2ak1 antibody, Eukaryotic translation

## Target Details

---

initiation factor 2 alpha kinase 1 antibody, Eukaryotic translation initiation factor 2-alpha kinase 1 antibody, HCR antibody, Heme controlled repressor antibody, Heme regulated eukaryotic initiation factor eIF 2 alpha kinase antibody, Heme regulated inhibitor antibody, Heme regulated initiation factor 2 alpha kinase antibody, Heme regulated repressor antibody, Heme sensitive initiation factor 2a kinase antibody, Heme-controlled repressor antibody, Heme-regulated eukaryotic initiation factor eIF-2-alpha kinase antibody, Heme-regulated inhibitor antibody, Hemin sensitive initiation factor 2 alpha kinase antibody, Hemin-sensitive initiation factor 2-alpha kinase antibody, HRI antibody, KIAA1369 antibody, PRO1362 antibody

UniProt: [Q9BQI3](#)

Pathways: [Hepatitis C](#)

## Application Details

---

Application Notes: WB:1:500-1:2000, IHC:1:100-1:300, ELISA:1:40000,

Restrictions: For Research Use only

## Handling

---

Format: Liquid

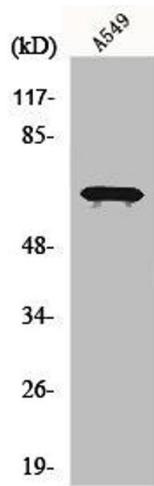
Buffer: Liquid in PBS containing 50 % glycerol, 0.5 % BSA and 0.02 % sodium azide.

Preservative: Sodium azide

Precaution of Use: This product contains Sodium azide: a POISONOUS AND HAZARDOUS SUBSTANCE which should be handled by trained staff only.

Storage: -20 °C,-80 °C

Storage Comment: Upon receipt, store at -20°C or -80°C. Avoid repeated freeze.



### Western Blotting

**Image 1.** Western Blot analysis of various cells using EIF2AK1 Polyclonal Antibody