



[Go to Product page](#)

Datasheet for ABIN7185049  
**anti-INHBA antibody (C-Term)**

1 Image

### Overview

Quantity:	100 µg
Target:	INHBA
Binding Specificity:	C-Term
Reactivity:	Human
Host:	Rabbit
Clonality:	Polyclonal
Conjugate:	This INHBA antibody is un-conjugated
Application:	Western Blotting (WB), ELISA

### Product Details

Immunogen:	Synthesized peptide derived from the C-terminal region of Human Inhibin beta-A.
Isotype:	IgG
Cross-Reactivity:	Human, Mouse, Rat
Purification:	The antibody was affinity-purified from rabbit antiserum by affinity-chromatography using epitope-specific immunogen.

### Target Details

Target:	INHBA
Alternative Name:	INHBA ( <a href="#">INHBA Products</a> )
Background:	Activin beta-A chain antibody, EDF antibody, Erythroid differentiation factor antibody, Erythroid

## Target Details

differentiation protein antibody, Follicle stimulating hormone releasing protein antibody, FRP antibody, FSH releasing protein antibody, INHBA antibody, INHBA\_HUMAN antibody, Inhibin beta A chain antibody, Inhibin beta A subunit antibody, Inhibin, beta 1 antibody, Inhibin, beta A (activin A, activin AB alpha polypeptide) antibody

UniProt: [P08476](#)

Pathways: [Hormone Transport](#), [Peptide Hormone Metabolism](#), [Hormone Activity](#), [Negative Regulation of Hormone Secretion](#), [Autophagy](#)

## Application Details

Application Notes: WB:1:500-1:2000, ELISA:1:20000,

Restrictions: For Research Use only

## Handling

Format: Liquid

Buffer: Liquid in PBS containing 50 % glycerol, 0.5 % BSA and 0.02 % sodium azide.

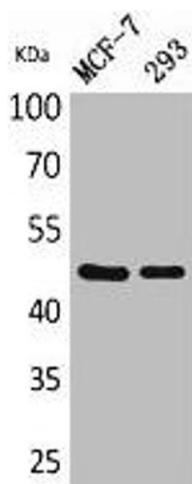
Preservative: Sodium azide

Precaution of Use: This product contains Sodium azide: a POISONOUS AND HAZARDOUS SUBSTANCE which should be handled by trained staff only.

Storage: -20 °C,-80 °C

Storage Comment: Upon receipt, store at -20°C or -80°C. Avoid repeated freeze.

## Images



### Western Blotting

**Image 1.** Western Blot analysis of MCF-7, 293 cells using Inhibin  $\beta$ -A Polyclonal Antibody.