

Datasheet for ABIN7185053  
**anti-ITGA2 antibody (C-Term)**[Go to Product page](#)

## 2 Images

## Overview

Quantity:	100 µg
Target:	ITGA2
Binding Specificity:	C-Term
Reactivity:	Human
Host:	Rabbit
Clonality:	Polyclonal
Conjugate:	This ITGA2 antibody is un-conjugated
Application:	Western Blotting (WB), ELISA

## Product Details

Immunogen:	Synthesized peptide derived from the C-terminal region of Human Integrin alpha2.
Isotype:	IgG
Cross-Reactivity:	Human, Mouse, Rat
Purification:	The antibody was affinity-purified from rabbit antiserum by affinity-chromatography using epitope-specific immunogen.

## Target Details

Target:	ITGA2
Alternative Name:	ITGA2 ( <a href="#">ITGA2 Products</a> )
Background:	BR antibody, CD 49b antibody, CD49 antigen like family member B antibody, CD49 antigen-like

## Target Details

family member B antibody, CD49b antibody, CD49b antigen antibody, Collagen receptor antibody, DX5 antibody, Glycoprotein Ia deficiency included antibody, GP Ia antibody, GP Ia deficiency, included antibody, GPIa antibody, HPA 5 included antibody, HPA5 included antibody, Human platelet alloantigen system 5 antibody, Integrin alpha 2 antibody, Integrin alpha II antibody, Integrin alpha-2 antibody, Integrin, alpha 2 (CD49B alpha 2 subunit of VLA 2 receptor) antibody, ITA2\_HUMAN antibody, ITGA2 antibody, Platelet alloantigen Br(a), included antibody, Platelet antigen Br antibody, Platelet glycoprotein GPIa antibody, Platelet glycoprotein Ia antibody, Platelet glycoprotein Ia/IIa antibody, Platelet membrane glycoprotein Ia antibody, Platelet receptor for collagen, deficiency of, included antibody, Very late activation protein 2 receptor alpha 2 subunit antibody, VLA 2 alpha chain antibody, VLA 2 antibody, VLA 2 subunit alpha antibody, VLA-2 subunit alpha antibody, VLA2 antibody, VLA2 receptor alpha 2 subunit antibody, VLAA2 antibody

UniProt: [P17301](#)

Pathways: [CXCR4-mediated Signaling Events](#), [Smooth Muscle Cell Migration](#), [Integrin Complex](#)

## Application Details

Application Notes: WB:1:500-1:2000, ELISA:1:10000,

Restrictions: For Research Use only

## Handling

Format: Liquid

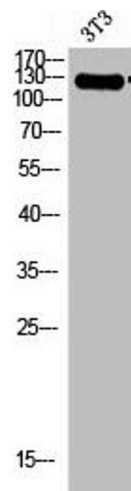
Buffer: Liquid in PBS containing 50 % glycerol, 0.5 % BSA and 0.02 % sodium azide.

Preservative: Sodium azide

Precaution of Use: This product contains Sodium azide: a POISONOUS AND HAZARDOUS SUBSTANCE which should be handled by trained staff only.

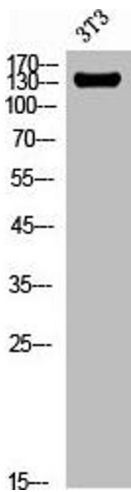
Storage: -20 °C, -80 °C

Storage Comment: Upon receipt, store at -20°C or -80°C. Avoid repeated freeze.



#### Western Blotting

**Image 1.** Western Blot analysis of 3T3 cells using Integrin α2 Polyclonal Antibody



#### Western Blotting

**Image 2.** Western Blot analysis of NIH-3T3 cells using Integrin α2 Polyclonal Antibody