



[Go to Product page](#)

Datasheet for ABIN7185055

## anti-ITGA6 antibody (Cleaved-Glu942)

### 1 Image

#### Overview

|                      |                                      |
|----------------------|--------------------------------------|
| Quantity:            | 100 µg                               |
| Target:              | ITGA6                                |
| Binding Specificity: | Cleaved-Glu942                       |
| Reactivity:          | Human                                |
| Host:                | Rabbit                               |
| Clonality:           | Polyclonal                           |
| Conjugate:           | This ITGA6 antibody is un-conjugated |
| Application:         | Western Blotting (WB), ELISA         |

#### Product Details

|                   |   |
|-------------------|---|
| Immunogen:        | Synthesized peptide derived from the C-terminal region of Human Integrin alpha6 LC.                                   |
| Isotype:          | IgG   |
| Cross-Reactivity: | Human   |
| Purification:     | The antibody was affinity-purified from rabbit antiserum by affinity-chromatography using epitope-specific immunogen. |

#### Target Details

|                   |  |
|-------------------|--|
| Target:           | ITGA6  |
| Alternative Name: | ITGA6 ( <a href="#">ITGA6 Products</a> )   |
| Background:       | Alpha6p antibody, CD49 antigen-like family member F antibody, CD49f antibody, Integrin |

## Target Details

alpha6B antibody, Integrin, alpha 6 antibody, ITA6\_HUMAN antibody, ITGA6 antibody, ITGA6B antibody, Processed integrin alpha-6 antibody, VLA 6 antibody, VLA-6 antibody

UniProt: [P23229](#)

Pathways: [CXCR4-mediated Signaling Events](#), [Brown Fat Cell Differentiation](#), [Integrin Complex](#)

## Application Details

Application Notes: WB:1:500-1:2000, ELISA:1:10000,

Restrictions: For Research Use only

## Handling

Format: Liquid

Buffer: Liquid in PBS containing 50 % glycerol, 0.5 % BSA and 0.02 % sodium azide.

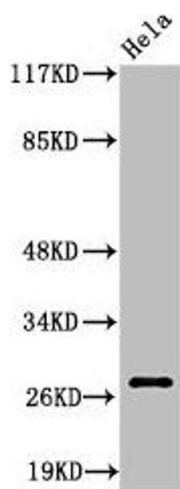
Preservative: Sodium azide

Precaution of Use: This product contains Sodium azide: a POISONOUS AND HAZARDOUS SUBSTANCE which should be handled by trained staff only.

Storage: -20 °C,-80 °C

Storage Comment: Upon receipt, store at -20°C or -80°C. Avoid repeated freeze.

## Images



### Western Blotting

**Image 1.** Western Blot analysis of HeLa cells using Cleaved-Integrin α6 LC (E942) Polyclonal Antibody