



Datasheet for ABIN7185059

anti-Integrin beta 5 antibody (C-Term)



[Go to Product page](#)

2 Images

Overview

Quantity:	100 µg
Target:	Integrin beta 5 (ITGB5)
Binding Specificity:	C-Term
Reactivity:	Human
Host:	Rabbit
Clonality:	Polyclonal
Conjugate:	This Integrin beta 5 antibody is un-conjugated
Application:	Western Blotting (WB), ELISA

Product Details

Immunogen:	Synthesized peptide derived from the C-terminal region of Human Integrin beta5.
Isotype:	IgG
Cross-Reactivity:	Human, Monkey, Mouse, Rat
Purification:	The antibody was affinity-purified from rabbit antiserum by affinity-chromatography using epitope-specific immunogen.

Target Details

Target:	Integrin beta 5 (ITGB5)
Alternative Name:	ITGB5 (ITGB5 Products)
Background:	FLJ26658 antibody, Integrin beta-5 antibody, Integrin subunit beta 5 antibody, integrin, beta 5

Target Details

antibody, ITB5_HUMAN antibody, Itgb5 antibody, Testis secretory sperm-binding protein Li 217p antibody

UniProt: [P18084](#)

Pathways: [Integrin Complex](#)

Application Details

Application Notes: WB:1:500-1:2000, ELISA:1:20000,

Restrictions: For Research Use only

Handling

Format: Liquid

Buffer: Liquid in PBS containing 50 % glycerol, 0.5 % BSA and 0.02 % sodium azide.

Preservative: Sodium azide

Precaution of Use: This product contains Sodium azide: a POISONOUS AND HAZARDOUS SUBSTANCE which should be handled by trained staff only.

Storage: -20 °C,-80 °C

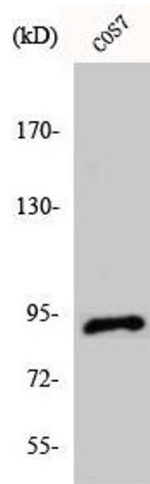
Storage Comment: Upon receipt, store at -20°C or -80°C. Avoid repeated freeze.

Images



Western Blotting

Image 1. Western Blot analysis of Jurkat cells using Integrin β 5 Polyclonal Antibody



Western Blotting

Image 2. Western Blot analysis of COS7 cells using Integrin β 5 Polyclonal Antibody