

Datasheet for ABIN7185068
anti-JMY antibody (C-Term)[Go to Product page](#)

1 Image

Overview

Quantity:	100 µg
Target:	JMY
Binding Specificity:	C-Term
Reactivity:	Human
Host:	Rabbit
Clonality:	Polyclonal
Conjugate:	This JMY antibody is un-conjugated
Application:	Western Blotting (WB), ELISA

Product Details

Immunogen:	Synthesized peptide derived from the C-terminal region of Human JMY.
Isotype:	IgG
Cross-Reactivity:	Human, Mouse
Purification:	The antibody was affinity-purified from rabbit antiserum by affinity-chromatography using epitope-specific immunogen.

Target Details

Target:	JMY
Alternative Name:	JMY (JMY Products)
Background:	FLJ37870 antibody, Jmy antibody, JMY protein antibody, JMY_HUMAN antibody, junction

Target Details

mediating and regulatory protein antibody, Junction mediating and regulatory protein p53 cofactor antibody, Junction-mediating and -regulatory protein antibody, MGC163496 antibody, OTTHUMP00000161976 antibody, WAS protein homology region 2 domain containing 1-like 3 antibody, WHDC1L3 antibody

UniProt: [Q8N9B5](#)

Pathways: [Regulation of Actin Filament Polymerization](#)

Application Details

Application Notes: WB:1:500-1:2000, ELISA:1:5000,

Restrictions: For Research Use only

Handling

Format: Liquid

Buffer: Liquid in PBS containing 50 % glycerol, 0.5 % BSA and 0.02 % sodium azide.

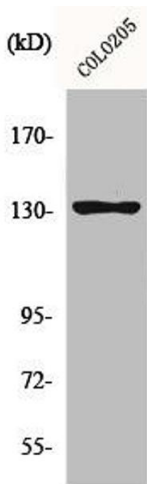
Preservative: Sodium azide

Precaution of Use: This product contains Sodium azide: a POISONOUS AND HAZARDOUS SUBSTANCE which should be handled by trained staff only.

Storage: -20 °C,-80 °C

Storage Comment: Upon receipt, store at -20°C or -80°C. Avoid repeated freeze.

Images



Western Blotting

Image 1. Western Blot analysis of COLO205 cells using JMY Polyclonal Antibody