

Datasheet for ABIN7185083
anti-KCND1 antibody (C-Term)[Go to Product page](#)

1 Image

Overview

Quantity:	100 µg
Target:	KCND1 (Kcnd1)
Binding Specificity:	C-Term
Reactivity:	Human
Host:	Rabbit
Clonality:	Polyclonal
Conjugate:	This KCND1 antibody is un-conjugated
Application:	Western Blotting (WB), ELISA, Immunohistochemistry (IHC)

Product Details

Immunogen:	Synthesized peptide derived from the C-terminal region of Human KV4.1.
Isotype:	IgG
Cross-Reactivity:	Human, Mouse
Purification:	The antibody was affinity-purified from rabbit antiserum by affinity-chromatography using epitope-specific immunogen.

Target Details

Target:	KCND1 (Kcnd1)
Alternative Name:	KCND1 (Kcnd1 Products)
Background:	Kcnd1 antibody, KCND1_HUMAN antibody, Kv4.1 antibody, mShal antibody,

Target Details

OTTHUMP00000025805 antibody, OTTHUMP00000025806 antibody, Potassium voltage gated channel Shal related subfamily member 1 antibody, Potassium voltage gated channel subfamily D member 1 antibody, Potassium voltage-gated channel subfamily D member 1 antibody, Shal type potassium channel antibody, Voltage gated potassium channel Kv4.1 antibody, Voltage gated potassium channel subunit Kv4.1 antibody, Voltage-gated potassium channel subunit Kv4.1 antibody

UniProt: [Q9NSA2](#)

Application Details

Application Notes: WB:1:500-1:2000, IHC:1:100-1:300, ELISA:1:20000,

Restrictions: For Research Use only

Handling

Format: Liquid

Buffer: Liquid in PBS containing 50 % glycerol, 0.5 % BSA and 0.02 % sodium azide.

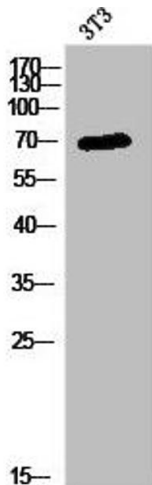
Preservative: Sodium azide

Precaution of Use: This product contains Sodium azide: a POISONOUS AND HAZARDOUS SUBSTANCE which should be handled by trained staff only.

Storage: -20 °C,-80 °C

Storage Comment: Upon receipt, store at -20°C or -80°C. Avoid repeated freeze.

Images



Western Blotting

Image 1. Western Blot analysis of 3T3 cells using KV4.1 Polyclonal Antibody