



[Go to Product page](#)

Datasheet for ABIN7185097
anti-LMO3 antibody (C-Term)

1 Image

Overview

Quantity:	100 µg
Target:	LMO3
Binding Specificity:	C-Term
Reactivity:	Human
Host:	Rabbit
Clonality:	Polyclonal
Conjugate:	This LMO3 antibody is un-conjugated
Application:	ELISA, Western Blotting (WB), Immunohistochemistry (IHC)

Product Details

Immunogen:	Synthesized peptide derived from the C-terminal region of Human LMO3.
Isotype:	IgG
Cross-Reactivity:	Human, Monkey, Mouse, Rat
Purification:	The antibody was affinity-purified from rabbit antiserum by affinity-chromatography using epitope-specific immunogen.

Target Details

Target:	LMO3
Alternative Name:	LMO3 (LMO3 Products)
Background:	DAT 1 antibody, DAT1 antibody, LIM domain only 3 (rhombotin like 2) antibody, LIM domain

Target Details

only protein 3 antibody, LMO 3 antibody, LMO-3 antibody, lmo3 antibody, LMO3_HUMAN antibody, MGC26081 antibody, Neuronal specific transcription factor DAT1 antibody, Neuronal-specific transcription factor DAT1 antibody, RBTN 3 antibody, RBTN3 antibody, RBTN2 antibody, RBTN2 antibody, RHOM 3 antibody, RHOM3 antibody, Rhombotin 3 antibody, Rhombotin like 2 antibody, Rhombotin-3 antibody, Rhombotin3 antibody

UniProt: [Q8TAP4](#)

Pathways: [Dopaminergic Neurogenesis](#)

Application Details

Application Notes: WB:1:500-1:2000, IHC:1:100-1:300, ELISA:1:10000,

Restrictions: For Research Use only

Handling

Format: Liquid

Buffer: Liquid in PBS containing 50 % glycerol, 0.5 % BSA and 0.02 % sodium azide.

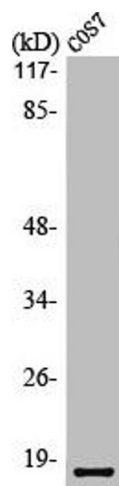
Preservative: Sodium azide

Precaution of Use: This product contains Sodium azide: a POISONOUS AND HAZARDOUS SUBSTANCE which should be handled by trained staff only.

Storage: -20 °C,-80 °C

Storage Comment: Upon receipt, store at -20°C or -80°C. Avoid repeated freeze.

Images



Western Blotting

Image 1. Western Blot analysis of COS7 cells using LMO3 Polyclonal Antibody