



[Go to Product page](#)

Datasheet for ABIN7185112

anti-MC1 Receptor antibody (C-Term)

1 Image

Overview

Quantity:	100 µg
Target:	MC1 Receptor (MC1R)
Binding Specificity:	C-Term
Reactivity:	Human
Host:	Rabbit
Clonality:	Polyclonal
Conjugate:	This MC1 Receptor antibody is un-conjugated
Application:	ELISA, Western Blotting (WB), Immunofluorescence (IF)

Product Details

Immunogen:	Synthesized peptide derived from the C-terminal region of Human MC1-R.
Isotype:	IgG
Cross-Reactivity:	Human
Purification:	The antibody was affinity-purified from rabbit antiserum by affinity-chromatography using epitope-specific immunogen.

Target Details

Target:	MC1 Receptor (MC1R)
Alternative Name:	MC1R (MC1R Products)
Background:	CMM5 antibody, MC1 Receptor antibody, MC1-R antibody, MC1R antibody, Melanocortin 1

Target Details

receptor antibody, Melanocortin 1 receptor (alpha melanocyte stimulating hormone receptor) antibody, Melanocortin receptor 1 antibody, Melanocyte-stimulating hormone receptor antibody, Melanotropin receptor antibody, MSH-R antibody, MSHR antibody, MSHR_HUMAN antibody, SHEP2 antibody

UniProt: [Q01726](#)

Pathways: [cAMP Metabolic Process](#), [Feeding Behaviour](#)

Application Details

Application Notes: WB:1:500-1:2000, IF:1:200-1:1000, ELISA:1:5000,

Restrictions: For Research Use only

Handling

Format: Liquid

Buffer: Liquid in PBS containing 50 % glycerol, 0.5 % BSA and 0.02 % sodium azide.

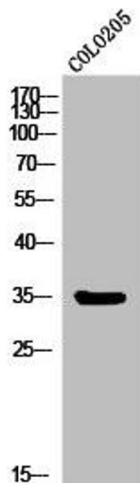
Preservative: Sodium azide

Precaution of Use: This product contains Sodium azide: a POISONOUS AND HAZARDOUS SUBSTANCE which should be handled by trained staff only.

Storage: -20 °C,-80 °C

Storage Comment: Upon receipt, store at -20°C or -80°C. Avoid repeated freeze.

Images



Western Blotting

Image 1. Western Blot analysis of COLO205 cells using MC1-R Polyclonal Antibody