

Datasheet for ABIN7185136
anti-Midkine antibody (C-Term)[Go to Product page](#)

1 Image

Overview

Quantity:	100 µg
Target:	Midkine (MDK)
Binding Specificity:	C-Term
Reactivity:	Human
Host:	Rabbit
Clonality:	Polyclonal
Conjugate:	This Midkine antibody is un-conjugated
Application:	Western Blotting (WB), ELISA

Product Details

Immunogen:	Synthesized peptide derived from the C-terminal region of Human MK.
Isotype:	IgG
Cross-Reactivity:	Human, Rat
Purification:	The antibody was affinity-purified from rabbit antiserum by affinity-chromatography using epitope-specific immunogen.

Target Details

Target:	Midkine (MDK)
Alternative Name:	MDK (MDK Products)
Background:	Amphiregulin associated protein antibody, Amphiregulin-associated protein antibody, ARAP

Target Details

antibody, FLJ27379 antibody, Mdk antibody, Midgestation and kidney protein antibody, Midkine antibody, MK 1 antibody, MK antibody, MK_HUMAN antibody, MK1 antibody, NEGF 2 antibody, NEGF2 antibody, Neurite growth promoting factor 2 antibody, Neurite outgrowth promoting protein antibody, Neurite outgrowth-promoting factor 2 antibody, Neurite outgrowth-promoting protein antibody, Retinoic acid inducible factor antibody

UniProt: [P21741](#)

Pathways: [RTK Signaling](#), [M Phase](#), [Skeletal Muscle Fiber Development](#)

Application Details

Application Notes: WB:1:500-1:2000, ELISA:1:40000,

Restrictions: For Research Use only

Handling

Format: Liquid

Buffer: Liquid in PBS containing 50 % glycerol, 0.5 % BSA and 0.02 % sodium azide.

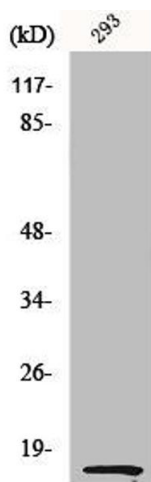
Preservative: Sodium azide

Precaution of Use: This product contains Sodium azide: a POISONOUS AND HAZARDOUS SUBSTANCE which should be handled by trained staff only.

Storage: -20 °C,-80 °C

Storage Comment: Upon receipt, store at -20°C or -80°C. Avoid repeated freeze.

Images



Western Blotting

Image 1. Western Blot analysis of 293 cells using MK Polyclonal Antibody