

Datasheet for ABIN7185159  
**anti-Mrgprf antibody (C-Term)**[Go to Product page](#)

## 1 Image

## Overview

Quantity:	100 µg
Target:	Mrgprf
Binding Specificity:	C-Term
Reactivity:	Human
Host:	Rabbit
Clonality:	Polyclonal
Conjugate:	This Mrgprf antibody is un-conjugated
Application:	Western Blotting (WB), ELISA, Immunofluorescence (IF)

## Product Details

Immunogen:	Synthesized peptide derived from the C-terminal region of Human MRGF.
Isotype:	IgG
Cross-Reactivity:	Human, Mouse, Rat
Purification:	The antibody was affinity-purified from rabbit antiserum by affinity-chromatography using epitope-specific immunogen.

## Target Details

Target:	Mrgprf
Alternative Name:	MRGPRF ( <a href="#">Mrgprf Products</a> )
Background:	DKFZp586B2122 antibody, FLJ16111 antibody, FLJ29034 antibody, FLJ40998 antibody,

## Target Details

FLJ53714 antibody, G protein coupled receptor 140 antibody, G protein coupled receptor 168 antibody, G protein coupled receptor MrgF antibody, G-protein coupled receptor 140 antibody, G-protein coupled receptor 168 antibody, GPR140 antibody, GPR168 antibody, Mas related G protein coupled MRGF antibody, Mas related G protein coupled receptor member F antibody, Mas related gene F protein antibody, MAS related GPR member F antibody, Mas-related G-protein coupled receptor member F antibody, Mas-related gene F protein antibody, MGC21621 antibody, MRGF antibody, Mrgprf antibody, MRGRF\_HUMAN antibody, RTA antibody, Seven transmembrane helix receptor antibody

UniProt: [Q96AM1](#)

## Application Details

Application Notes: WB:1:500-1:2000, IF:1:200-1:1000, ELISA:1:5000,

Restrictions: For Research Use only

## Handling

Format: Liquid

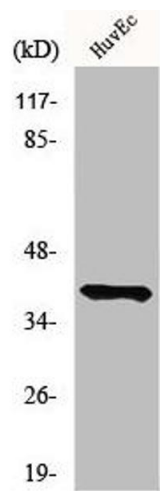
Buffer: Liquid in PBS containing 50 % glycerol, 0.5 % BSA and 0.02 % sodium azide.

Preservative: Sodium azide

Precaution of Use: This product contains Sodium azide: a POISONOUS AND HAZARDOUS SUBSTANCE which should be handled by trained staff only.

Storage: -20 °C,-80 °C

Storage Comment: Upon receipt, store at -20°C or -80°C. Avoid repeated freeze.



Western Blotting

**Image 1.** Western Blot analysis of HuvEc cells using MRGF Polyclonal Antibody