

Datasheet for ABIN7185162  
**anti-MRGPRX4 antibody (C-Term)**[Go to Product page](#)

## 1 Image

## Overview

Quantity:	100 µg
Target:	MRGPRX4
Binding Specificity:	C-Term
Reactivity:	Human
Host:	Rabbit
Clonality:	Polyclonal
Conjugate:	This MRGPRX4 antibody is un-conjugated
Application:	Western Blotting (WB), ELISA, Immunofluorescence (IF)

## Product Details

Immunogen:	Synthesized peptide derived from the C-terminal region of Human MRGX4.
Isotype:	IgG
Cross-Reactivity:	Human
Purification:	The antibody was affinity-purified from rabbit antiserum by affinity-chromatography using epitope-specific immunogen.

## Target Details

Target:	MRGPRX4
Alternative Name:	MRGPRX4 ( <a href="#">MRGPRX4 Products</a> )
Background:	G protein coupled receptor MRGX4 antibody, G protein coupled receptor SNSR5 antibody, G

## Target Details

protein coupled receptor SNSR6 antibody, GPCR antibody, Mas related G protein coupled receptor member X4 antibody, Mas related G protein coupled-receptor family, member X4 antibody, MAS related GPR, member X4 antibody, Mas-related G-protein coupled receptor member X4 antibody, MGC129753 antibody, MGC129754 antibody, MRGPRX4 antibody, MRGX4 antibody, MRGX4\_HUMAN antibody, Sensory neuron specific G protein coupled receptor 5/6 antibody, Sensory neuron-specific G-protein coupled receptor 5/6 antibody, SNSR5 antibody, SNSR6 antibody

UniProt: [Q96LA9](#)

## Application Details

Application Notes: WB:1:500-1:2000, IF:1:200-1:1000, ELISA:1:40000,

Restrictions: For Research Use only

## Handling

Format: Liquid

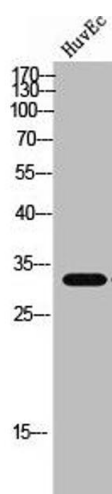
Buffer: Liquid in PBS containing 50 % glycerol, 0.5 % BSA and 0.02 % sodium azide.

Preservative: Sodium azide

Precaution of Use: This product contains Sodium azide: a POISONOUS AND HAZARDOUS SUBSTANCE which should be handled by trained staff only.

Storage: -20 °C, -80 °C

Storage Comment: Upon receipt, store at -20°C or -80°C. Avoid repeated freeze.



Western Blotting

**Image 1.** Western Blot analysis of HUVEC cells using MRGX4 Polyclonal Antibody