



[Go to Product page](#)

Datasheet for ABIN7185198  
**anti-STK38L antibody (C-Term)**

1 Image

### Overview

Quantity:	100 µg
Target:	STK38L
Binding Specificity:	C-Term
Reactivity:	Human
Host:	Rabbit
Clonality:	Polyclonal
Conjugate:	This STK38L antibody is un-conjugated
Application:	Western Blotting (WB), ELISA, Immunohistochemistry (IHC)

### Product Details

Immunogen:	Synthesized peptide derived from the C-terminal region of Human NDR2.
Isotype:	IgG
Cross-Reactivity:	Human, Mouse, Rat
Purification:	The antibody was affinity-purified from rabbit antiserum by affinity-chromatography using epitope-specific immunogen.

### Target Details

Target:	STK38L
Alternative Name:	STK38L ( <a href="#">STK38L Products</a> )
Background:	KIAA0965 antibody, NDR2 antibody, NDR2 protein kinase antibody, nuclear Dbf2 related 2

## Target Details

antibody, Nuclear Dbf2 related kinase 2 antibody, Nuclear Dbf2-related kinase 2 antibody, Serine/threonine protein kinase 38 like antibody, Serine/threonine-protein kinase 38-like antibody, ST38L\_HUMAN antibody, Stk38l antibody

UniProt: [Q9Y2H1](#)

## Application Details

Application Notes: WB:1:500-1:2000, IHC:1:100-1:300, IHC:1:200-1:1000, ELISA:1:5000,

Restrictions: For Research Use only

## Handling

Format: Liquid

Buffer: Liquid in PBS containing 50 % glycerol, 0.5 % BSA and 0.02 % sodium azide.

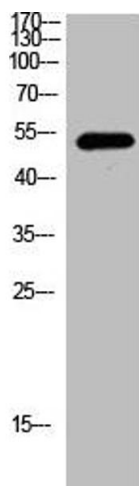
Preservative: Sodium azide

Precaution of Use: This product contains Sodium azide: a POISONOUS AND HAZARDOUS SUBSTANCE which should be handled by trained staff only.

Storage: -20 °C,-80 °C

Storage Comment: Upon receipt, store at -20°C or -80°C. Avoid repeated freeze.

## Images



### Western Blotting

**Image 1.** Western Blot analysis of mouse cells using NDR2 Polyclonal Antibody