



[Go to Product page](#)

Datasheet for ABIN7185207

anti-Netrin 1 antibody (C-Term)

1 Image

Overview

Quantity:	100 µg
Target:	Netrin 1 (NTN1)
Binding Specificity:	C-Term
Reactivity:	Human
Host:	Rabbit
Clonality:	Polyclonal
Conjugate:	This Netrin 1 antibody is un-conjugated
Application:	Western Blotting (WB), ELISA

Product Details

Immunogen:	Synthesized peptide derived from the C-terminal region of Human Netrin-1.
Isotype:	IgG
Cross-Reactivity:	Human, Mouse, Rat
Purification:	The antibody was affinity-purified from rabbit antiserum by affinity-chromatography using epitope-specific immunogen.

Target Details

Target:	Netrin 1 (NTN1)
Alternative Name:	NTN1 (NTN1 Products)
Background:	Epididymis tissue protein Li 131P antibody, NET1_HUMAN antibody, Netrin 1, mouse, homolog

Target Details

of antibody, Netrin 1-like antibody, Netrin-1 antibody, Netrin1 antibody, Ntn 1 antibody, NTN 1L antibody, NTN1 antibody, NTN1L antibody, Unc6 antibody

UniProt: [O95631](#)

Pathways: [Regulation of Cell Size](#)

Application Details

Application Notes: WB:1:500-1:2000, ELISA:1:20000,

Restrictions: For Research Use only

Handling

Format: Liquid

Buffer: Liquid in PBS containing 50 % glycerol, 0.5 % BSA and 0.02 % sodium azide.

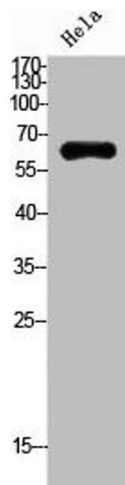
Preservative: Sodium azide

Precaution of Use: This product contains Sodium azide: a POISONOUS AND HAZARDOUS SUBSTANCE which should be handled by trained staff only.

Storage: -20 °C,-80 °C

Storage Comment: Upon receipt, store at -20°C or -80°C. Avoid repeated freeze.

Images



Western Blotting

Image 1. Western Blot analysis of HeLa cells using Netrin-1 Polyclonal Antibody