



[Go to Product page](#)

Datasheet for ABIN7185223  
**anti-NHE8 antibody (C-Term)**

1 Image

Overview

Quantity:	100 µg
Target:	NHE8 (SLC9A8)
Binding Specificity:	C-Term
Reactivity:	Human
Host:	Rabbit
Clonality:	Polyclonal
Conjugate:	This NHE8 antibody is un-conjugated
Application:	Western Blotting (WB), ELISA, Immunohistochemistry (IHC)

Product Details

Immunogen:	Synthesized peptide derived from the C-terminal region of Human NHE-8.
Isotype:	IgG
Cross-Reactivity:	Human, Mouse, Rat
Purification:	The antibody was affinity-purified from rabbit antiserum by affinity-chromatography using epitope-specific immunogen.

Target Details

Target:	NHE8 (SLC9A8)
Alternative Name:	SLC9A8 ( <a href="#">SLC9A8 Products</a> )
Background:	Na(+)/H(+) exchanger 8 antibody, NHE 8 antibody, NHE-8 antibody, NHE8 antibody,

## Target Details

SL9A8\_HUMAN antibody, Slc9a8 antibody, Sodium/ hydrogen exchanger 8 antibody, Sodium/hydrogen exchanger 8 antibody, solute carrier family 9 (sodium/hydrogen exchanger), member 8 antibody, Solute carrier family 9 member 8 antibody

UniProt: [Q9Y2E8](#)

Pathways: [Proton Transport](#)

## Application Details

Application Notes: WB:1:500-1:2000, IHC:1:100-1:300, IHC:1:200-1:1000, ELISA:1:40000,

Restrictions: For Research Use only

## Handling

Format: Liquid

Buffer: Liquid in PBS containing 50 % glycerol, 0.5 % BSA and 0.02 % sodium azide.

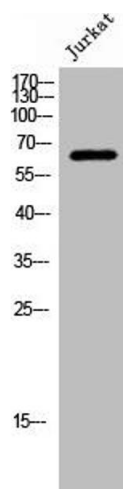
Preservative: Sodium azide

Precaution of Use: This product contains Sodium azide: a POISONOUS AND HAZARDOUS SUBSTANCE which should be handled by trained staff only.

Storage: -20 °C,-80 °C

Storage Comment: Upon receipt, store at -20°C or -80°C. Avoid repeated freeze.

## Images



### Western Blotting

**Image 1.** Western Blot analysis of Jurkat cells using NHE-8 Polyclonal Antibody