



[Go to Product page](#)

Datasheet for ABIN7185240

## anti-NPRL2 antibody (C-Term)

### 1 Image

#### Overview

Quantity:	100 µg
Target:	NPRL2
Binding Specificity:	C-Term
Reactivity:	Human
Host:	Rabbit
Clonality:	Polyclonal
Conjugate:	This NPRL2 antibody is un-conjugated
Application:	Western Blotting (WB), ELISA

#### Product Details

Immunogen:	Synthesized peptide derived from the C-terminal region of Human NPRL2.
Isotype:	IgG
Cross-Reactivity:	Human, Mouse, Rat
Purification:	The antibody was affinity-purified from rabbit antiserum by affinity-chromatography using epitope-specific immunogen.

#### Target Details

Target:	NPRL2
Alternative Name:	NPRL2 ( <a href="#">NPRL2 Products</a> )
Background:	2810446G01Rik antibody, G21 protein antibody, Gene 21 protein antibody, Homologous to

## Target Details

yeast nitrogen permease (candidate tumor suppressor) antibody, Homologous to yeast nitrogen permease antibody, Nitrogen permease regulator 2-like protein antibody, Nitrogen permease regulator-like 2 (*S. cerevisiae*) antibody, NPR 2L antibody, NPR L2 antibody, NPR like 2 antibody, NPR2 antibody, NPR2 like antibody, NPR2-like protein antibody, NPR2L antibody, NPRL 2 antibody, NPRL2 antibody, NPRL2\_HUMAN antibody, Tumor suppressor candidate 4 antibody, TUSC 4 antibody, TUSC 4 protein antibody, TUSC4 antibody, TUSC4 protein antibody

UniProt: [Q8WTW4](#)

## Application Details

Application Notes: WB:1:500-1:2000, ELISA:1:20000,

Restrictions: For Research Use only

## Handling

Format: Liquid

Buffer: Liquid in PBS containing 50 % glycerol, 0.5 % BSA and 0.02 % sodium azide.

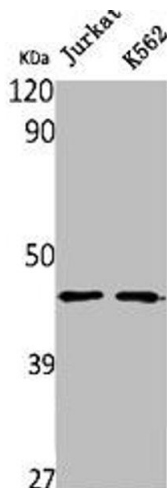
Preservative: Sodium azide

Precaution of Use: This product contains Sodium azide: a POISONOUS AND HAZARDOUS SUBSTANCE which should be handled by trained staff only.

Storage: -20 °C, -80 °C

Storage Comment: Upon receipt, store at -20°C or -80°C. Avoid repeated freeze.

## Images



### Western Blotting

**Image 1.** Western Blot analysis of Jurkat K562 cells using NPRL2 Polyclonal Antibody