

Datasheet for ABIN7185241  
**anti-SLC34A2 antibody (C-Term)**[Go to Product page](#)

## 1 Image

## Overview

Quantity:	100 µg
Target:	SLC34A2
Binding Specificity:	C-Term
Reactivity:	Human
Host:	Rabbit
Clonality:	Polyclonal
Conjugate:	This SLC34A2 antibody is un-conjugated
Application:	ELISA, Western Blotting (WB)

## Product Details

Immunogen:	Synthesized peptide derived from the C-terminal region of Human NPT2b.
Isotype:	IgG
Cross-Reactivity:	Human, Rat
Purification:	The antibody was affinity-purified from rabbit antiserum by affinity-chromatography using epitope-specific immunogen.

## Target Details

Target:	SLC34A2
Alternative Name:	SLC34A2 ( <a href="#">SLC34A2 Products</a> )
Background:	SLC34A2 antibody, Sodium-dependent phosphate transport protein 2B antibody, Sodium-

## Target Details

phosphate transport protein 2B antibody, Na(+)-dependent phosphate cotransporter 2B antibody, NaPi3b antibody, Sodium/phosphate cotransporter 2B antibody, Na(+)/Pi cotransporter 2B antibody, NaPi-2b antibody, Solute carrier family 34 member 2 antibody

UniProt: [O95436](#)

## Application Details

Application Notes: WB:1:500-1:2000, ELISA:1:20000,

Restrictions: For Research Use only

## Handling

Format: Liquid

Buffer: Liquid in PBS containing 50 % glycerol, 0.5 % BSA and 0.02 % sodium azide.

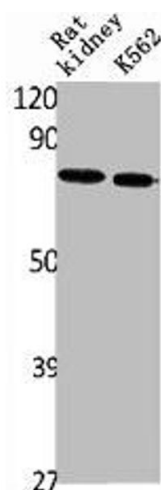
Preservative: Sodium azide

Precaution of Use: This product contains Sodium azide: a POISONOUS AND HAZARDOUS SUBSTANCE which should be handled by trained staff only.

Storage: -20 °C,-80 °C

Storage Comment: Upon receipt, store at -20°C or -80°C. Avoid repeated freeze.

## Images



### Western Blotting

**Image 1.** Western Blot analysis of rat kidney K562 cells using NPT2b Polyclonal Antibody