



[Go to Product page](#)

Datasheet for ABIN7185282

anti-OR1A1 antibody (C-Term)

1 Image

Overview

Quantity:	100 µg
Target:	OR1A1
Binding Specificity:	C-Term
Reactivity:	Human
Host:	Rabbit
Clonality:	Polyclonal
Conjugate:	This OR1A1 antibody is un-conjugated
Application:	Western Blotting (WB), ELISA

Product Details

Immunogen:	Synthesized peptide derived from the C-terminal region of Human Olfactory receptor 1A1.
Isotype:	IgG
Cross-Reactivity:	Human
Purification:	The antibody was affinity-purified from rabbit antiserum by affinity-chromatography using epitope-specific immunogen.

Target Details

Target:	OR1A1
Alternative Name:	OR1A1 (OR1A1 Products)
Background:	OR1A1 antibody, Olfactory receptor 1A1 antibody, Olfactory receptor 17-7 antibody, OR17-7

Target Details

antibody, Olfactory receptor OR17-11 antibody

UniProt: [Q9P1Q5](#)

Application Details

Application Notes: WB:1:500-1:2000, ELISA:1:20000,

Restrictions: For Research Use only

Handling

Format: Liquid

Buffer: Liquid in PBS containing 50 % glycerol, 0.5 % BSA and 0.02 % sodium azide.

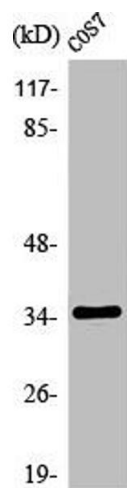
Preservative: Sodium azide

Precaution of Use: This product contains Sodium azide: a POISONOUS AND HAZARDOUS SUBSTANCE which should be handled by trained staff only.

Storage: -20 °C,-80 °C

Storage Comment: Upon receipt, store at -20°C or -80°C. Avoid repeated freeze.

Images



Western Blotting

Image 1. Western Blot analysis of COLO205 cells using Olfactory receptor 1A1 Polyclonal Antibody