



Datasheet for ABIN7185287  
**anti-OR2A1 antibody (C-Term)**



[Go to Product page](#)

1 Image

Overview

Quantity:	100 µg
Target:	OR2A1
Binding Specificity:	C-Term
Reactivity:	Human
Host:	Rabbit
Clonality:	Polyclonal
Conjugate:	This OR2A1 antibody is un-conjugated
Application:	Western Blotting (WB), ELISA, Immunofluorescence (IF)

Product Details

Immunogen:	Synthesized peptide derived from the C-terminal region of Human Olfactory receptor 2A42.
Isotype:	IgG
Cross-Reactivity:	Human
Purification:	The antibody was affinity-purified from rabbit antiserum by affinity-chromatography using epitope-specific immunogen.

Target Details

Target:	OR2A1
Alternative Name:	OR2A1 ( <a href="#">OR2A1 Products</a> )
Background:	OR2A1, antibody, OR2A42 antibody, Olfactory receptor 2A1/2A42 antibody, Olfactory receptor

## Target Details

OR7-16 antibody, Olfactory receptor OR7-19 antibody

UniProt: [Q8NGT9](#)

## Application Details

Application Notes: WB:1:500-1:2000, IF:1:200-1:1000, ELISA:1:5000,

Restrictions: For Research Use only

## Handling

Format: Liquid

Buffer: Liquid in PBS containing 50 % glycerol, 0.5 % BSA and 0.02 % sodium azide.

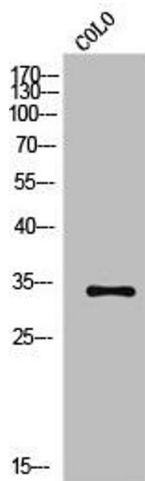
Preservative: Sodium azide

Precaution of Use: This product contains Sodium azide: a POISONOUS AND HAZARDOUS SUBSTANCE which should be handled by trained staff only.

Storage: -20 °C,-80 °C

Storage Comment: Upon receipt, store at -20°C or -80°C. Avoid repeated freeze.

## Images



### Western Blotting

**Image 1.** Western Blot analysis of COLO cells using Olfactory receptor 2A42 Polyclonal Antibody