

Datasheet for ABIN7185390  
**anti-MAPK14 antibody (C-Term)**



[Go to Product page](#)

3 Images

## Overview

Quantity:	100 µg
Target:	MAPK14
Binding Specificity:	C-Term
Reactivity:	Human
Host:	Rabbit
Clonality:	Polyclonal
Conjugate:	This MAPK14 antibody is un-conjugated
Application:	Western Blotting (WB), ELISA

## Product Details

Immunogen:	Synthesized peptide derived from the C-terminal region of Human p38.
Isotype:	IgG
Cross-Reactivity:	Chicken, Human, Mouse, Rat
Purification:	The antibody was affinity-purified from rabbit antiserum by affinity-chromatography using epitope-specific immunogen.

## Target Details

Target:	MAPK14
Alternative Name:	MAPK14 ( <a href="#">MAPK14 Products</a> )
Background:	CSAID Binding Protein 1 antibody, CSAID binding protein antibody, CSAID-binding protein

## Target Details

---

antibody, Csaids binding protein antibody, CSBP 1 antibody, CSBP 2 antibody, CSBP antibody, CSBP1 antibody, CSBP2 antibody, CSPB1 antibody, Cytokine suppressive anti-inflammatory drug-binding protein antibody, EXIP antibody, MAP kinase 14 antibody, MAP kinase MXI2 antibody, MAP kinase p38 alpha antibody, MAPK 14 antibody, MAPK14 antibody, MAX interacting protein 2 antibody, MAX-interacting protein 2 antibody, Mitogen Activated Protein Kinase 14 antibody, Mitogen activated protein kinase p38 alpha antibody, Mitogen-activated protein kinase 14 antibody, Mitogen-activated protein kinase p38 alpha antibody, MK14\_HUMAN antibody, Mxi 2 antibody, MXI2 antibody, p38 ALPHA antibody, p38 antibody, p38 MAP kinase antibody, p38 MAPK antibody, p38 mitogen activated protein kinase antibody, p38ALPHA antibody, p38alpha Exip antibody, PRKM14 antibody, PRKM15 antibody, RK antibody, SAPK2A antibody, Stress-activated protein kinase 2a antibody

---

UniProt: [Q16539](#)

---

Pathways: [MAPK Signaling](#), [Neurotrophin Signaling Pathway](#), [Activation of Innate immune Response](#), [Cellular Response to Molecule of Bacterial Origin](#), [Regulation of Muscle Cell Differentiation](#), [Regulation of Cell Size](#), [Hepatitis C](#), [Toll-Like Receptors Cascades](#), [Autophagy](#), [Thromboxane A2 Receptor Signaling](#), [BCR Signaling](#), [S100 Proteins](#)

## Application Details

---

Application Notes: WB:1:500-1:2000, ELISA:1:10000,

---

Restrictions: For Research Use only

## Handling

---

Format: Liquid

---

Buffer: Liquid in PBS containing 50 % glycerol, 0.5 % BSA and 0.02 % sodium azide.

---

Preservative: Sodium azide

---

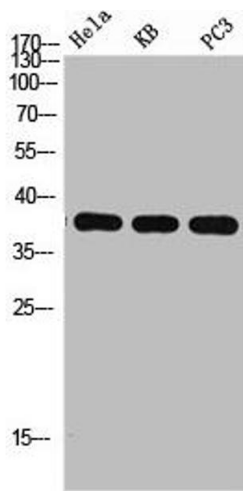
Precaution of Use: This product contains Sodium azide: a POISONOUS AND HAZARDOUS SUBSTANCE which should be handled by trained staff only.

---

Storage: -20 °C,-80 °C

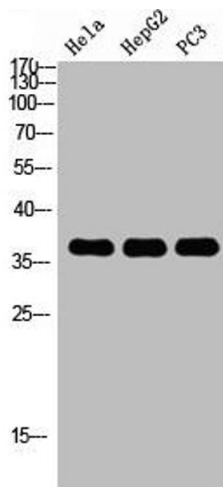
---

Storage Comment: Upon receipt, store at -20°C or -80°C. Avoid repeated freeze.



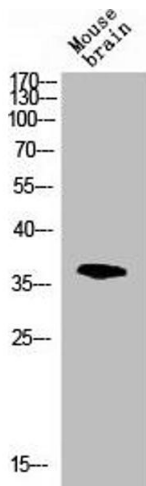
### Western Blotting

**Image 1.** Western Blot analysis of HELA KB PC-3 using p38 Polyclonal Antibody. Antibody was diluted at 1:1000. Secondary antibody was diluted at 1:20000



### Western Blotting

**Image 2.** Western Blot analysis of HELA HEPG2 PC-3 using p38 Polyclonal Antibody. Antibody was diluted at 1:1000. Secondary antibody was diluted at 1:20000



### Western Blotting

**Image 3.** Western blot analysis of mouse-brain lysis using p38 antibody. Antibody was diluted at 1:1000. Secondary antibody was diluted at 1:20000