



[Go to Product page](#)

Datasheet for ABIN7185404
anti-PDHA1 antibody (C-Term)

1 Image

Overview

Quantity:	100 µg
Target:	PDHA1
Binding Specificity:	C-Term
Reactivity:	Human
Host:	Rabbit
Clonality:	Polyclonal
Conjugate:	This PDHA1 antibody is un-conjugated
Application:	Western Blotting (WB), ELISA, Immunohistochemistry (IHC)

Product Details

Immunogen:	Synthesized peptide derived from the C-terminal region of Human PDHA1.
Isotype:	IgG
Cross-Reactivity:	Human, Mouse, Rat
Purification:	The antibody was affinity-purified from rabbit antiserum by affinity-chromatography using epitope-specific immunogen.

Target Details

Target:	PDHA1
Alternative Name:	PDHA1 (PDHA1 Products)
Background:	ODPA_HUMAN antibody, PDH antibody, PDHA antibody, PDHA1 antibody, PDHCE1A antibody,

Target Details

PDHE1 A type I antibody, PDHE1-A type I antibody, PHE1A antibody, Pyruvate Dehydrogenase (lipoamide) alpha 1 antibody, Pyruvate dehydrogenase complex, E1 alpha polypeptide 1 antibody, Pyruvate Dehydrogenase E1 alpha antibody, Pyruvate dehydrogenase E1 component subunit alpha antibody, Pyruvate dehydrogenase E1 component subunit alpha, somatic form, mitochondrial antibody

UniProt: [P08559](#)

Pathways: [Warburg Effect](#)

Application Details

Application Notes: WB:1:500-1:2000, IHC:1:100-1:300, ELISA:1:40000,

Restrictions: For Research Use only

Handling

Format: Liquid

Buffer: Liquid in PBS containing 50 % glycerol, 0.5 % BSA and 0.02 % sodium azide.

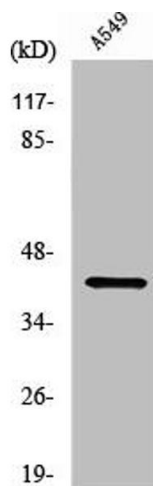
Preservative: Sodium azide

Precaution of Use: This product contains Sodium azide: a POISONOUS AND HAZARDOUS SUBSTANCE which should be handled by trained staff only.

Storage: -20 °C,-80 °C

Storage Comment: Upon receipt, store at -20°C or -80°C. Avoid repeated freeze.

Images



Western Blotting

Image 1. Western Blot analysis of Jurkat cells using PDHA1 Polyclonal Antibody